



CASA DE GRADINA DIN LEMN LALEA (34 MM), 4×3 M, 12 M², FARA PODEA

Produs #AV110A

PRETUL PRODUSULUI: 3644 € (~~3644~~)

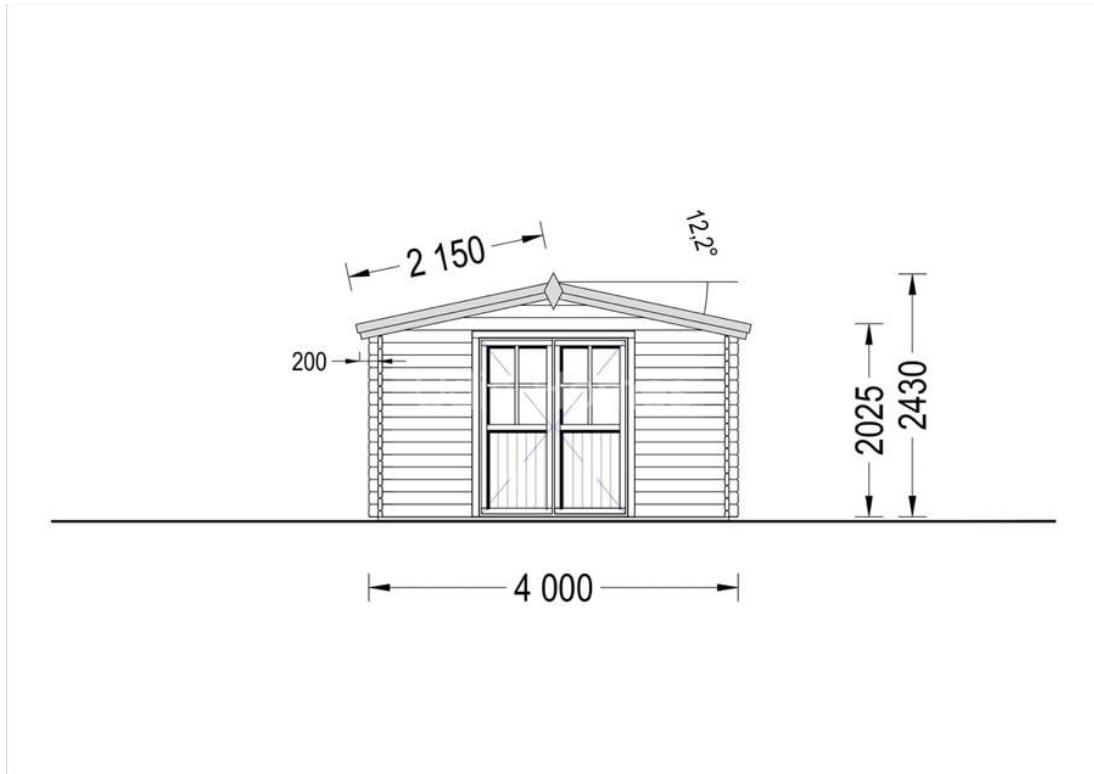
Pretul include: grinzi de fundatie tratate in autoclava, pereti (grinzi imbinare nut si feder pe cant si chertate la capete), podea (dusumea 20 mm imbinare nut si feder), usi si ferestre din lemn cu geam termopan (4/6/4, spatiu

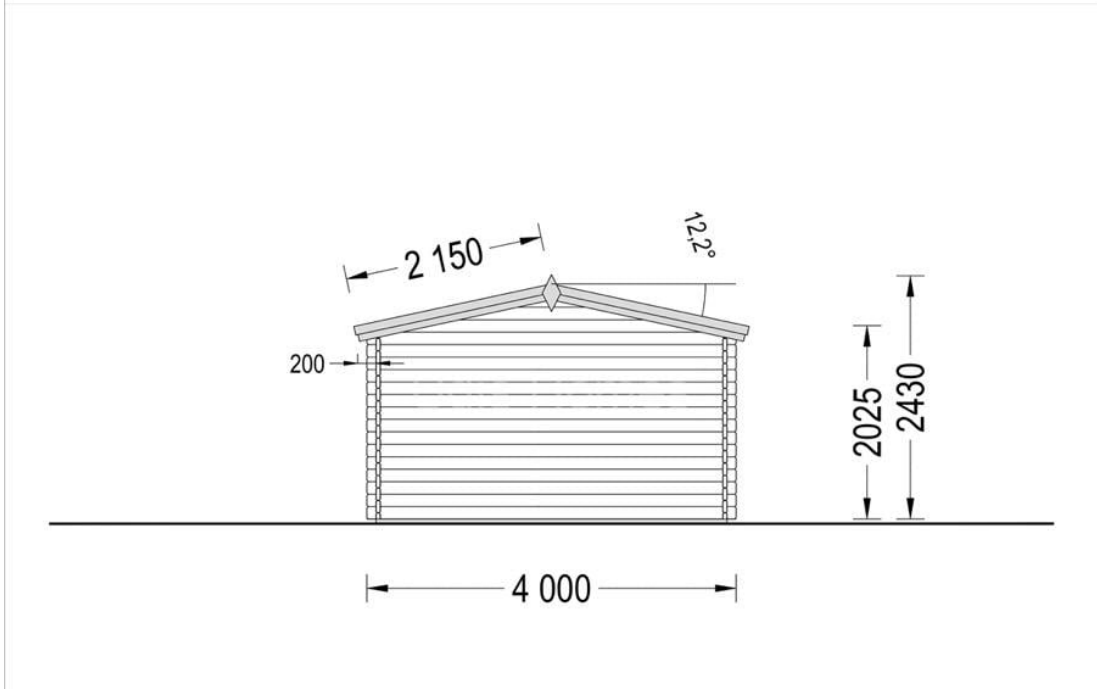
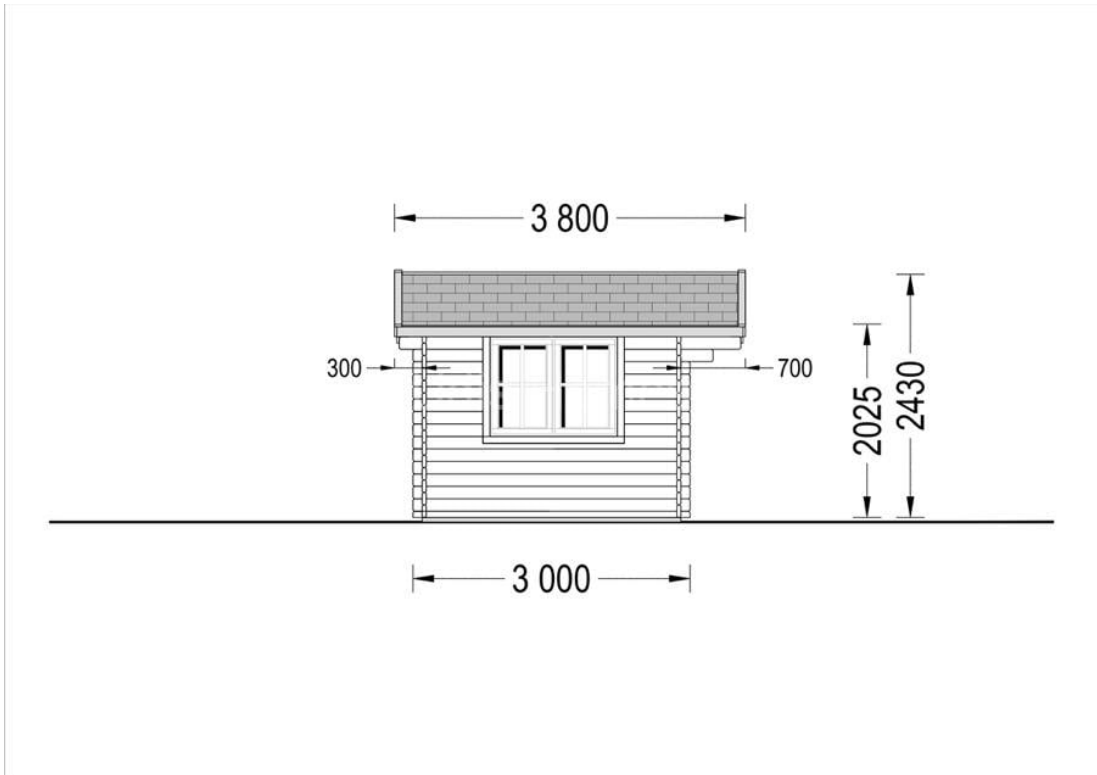


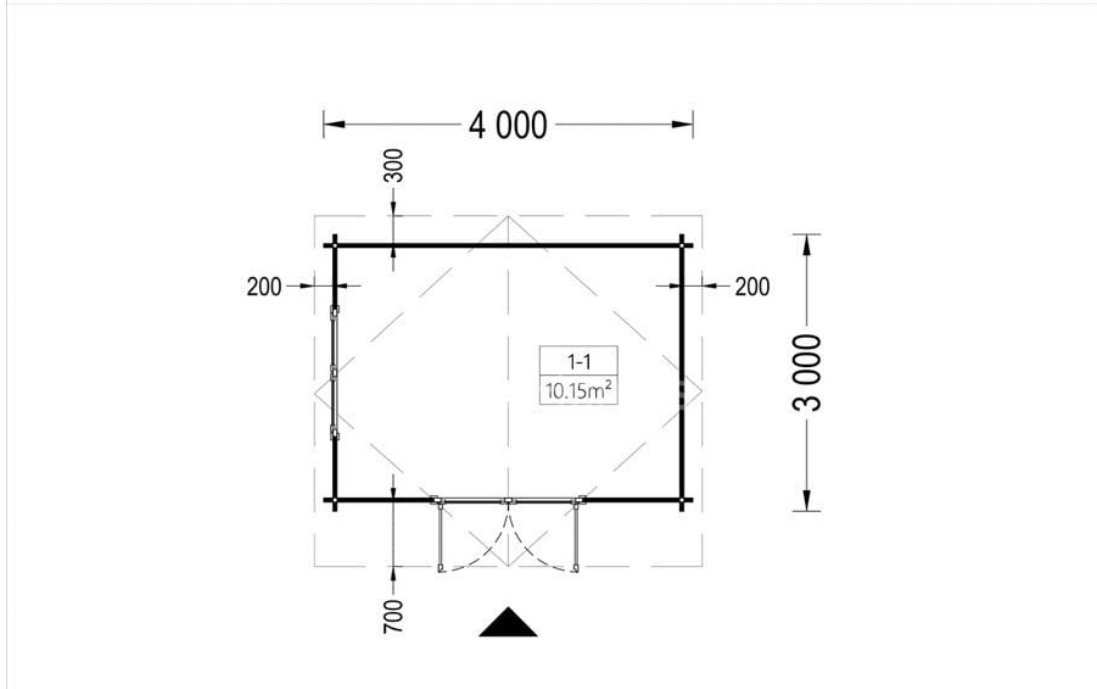
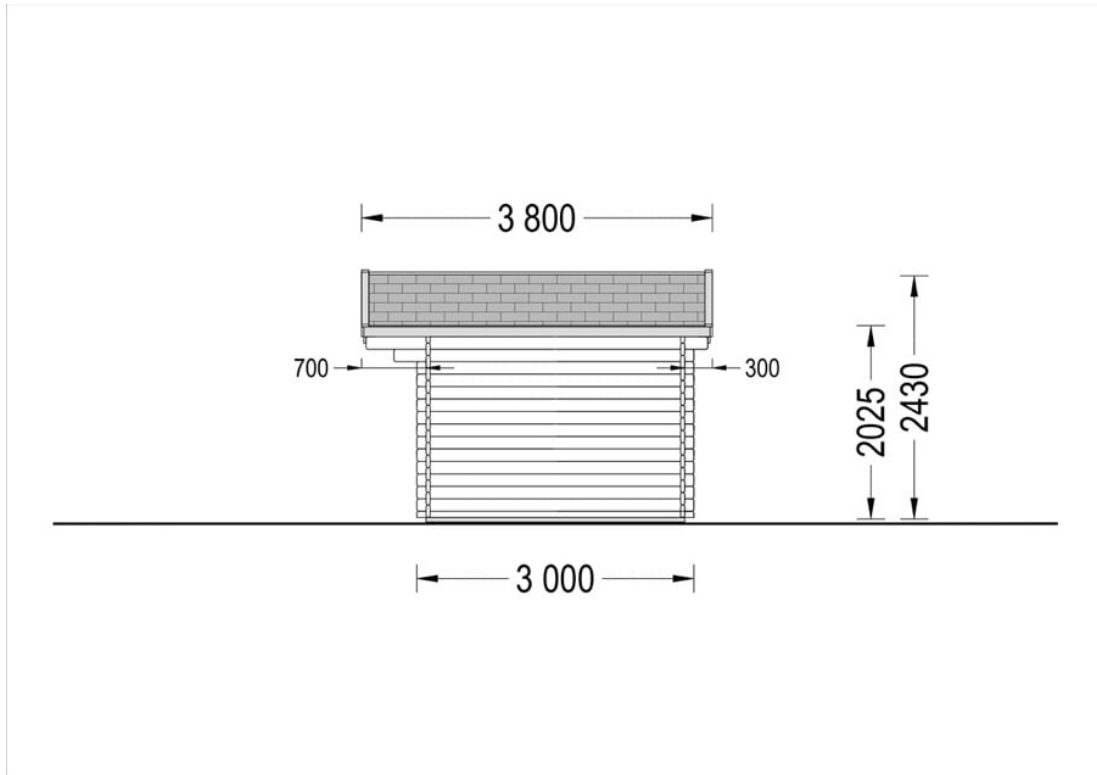
Material Pin si Molid Nordic
Grinzi de fundatie tratate in autoclava
Pereti opusi interschimbabili
Podea cu nut si feder inclus (in functie de modelul ales)
Usi si ferestre rezistente la umiditate
Feroneria inclusa
Asterala cu suport intarit
TVA inclus
Proiect tehnic
Rezistenta mai buna la putregai, mucegai si carii
Fabricat protejand padurile



SPECIFICATIILE SI IMAGINILE TEHNICE









SPECIFICATIILE TEHNICE

Dimensiuni ferestre	1* 138 cm x 105 cm
Grosime perete	34 mm
Inaltime la coama	243 cm
Inaltime la streasina	203 cm
Material	Pin nordic natural,crescut lent
Material acoperis	Placi de grosime 19-20 mm (Nut și Feder inclus)
Material de podea	Placi de grosime 19-20 mm (Nut și Feder inclus)
Material invelitoare	Optional
Panta acoperisului	14°
Suprafata acoperis	16 mp
Total metri patrati	12 m ²
Usa latime x inaltime	1* 161 cm x 192 cm