



CASA DE LOCUIT PREMIUM (IZOLATA, SIPS) 6×5 M 30 M² CU UN DORMITORIU

Produs #AV1224

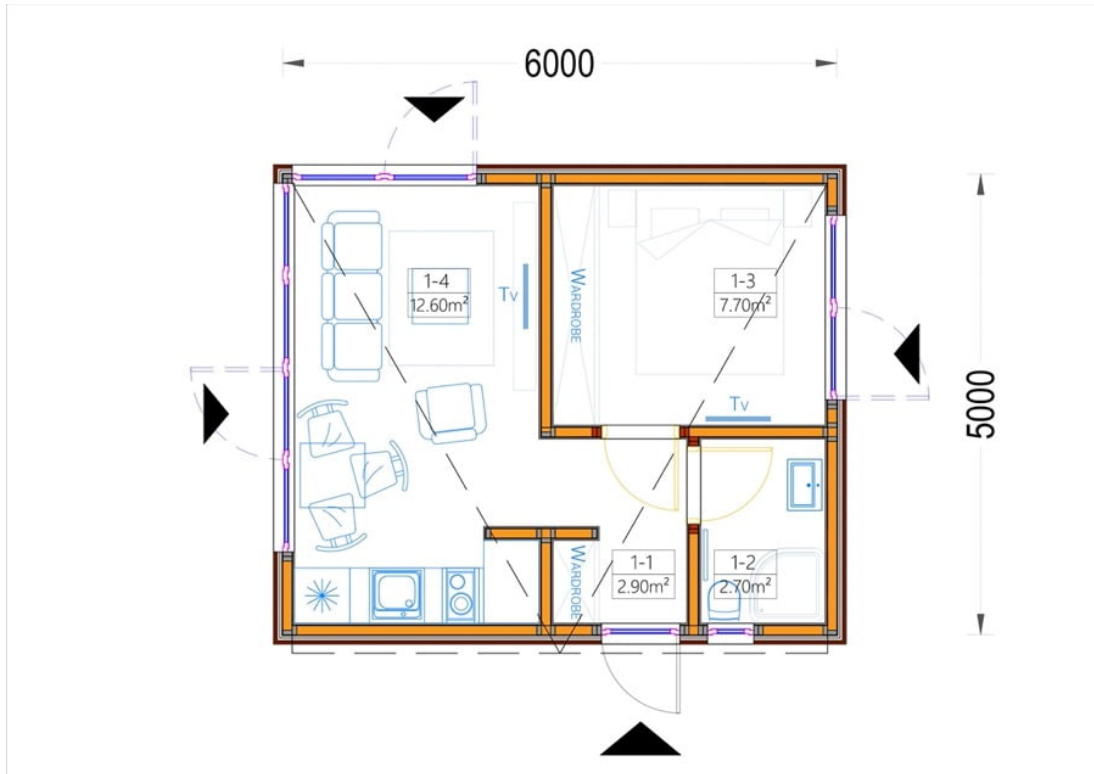
PRETUL PRODUSULUI: 32360 € (~~32360~~)

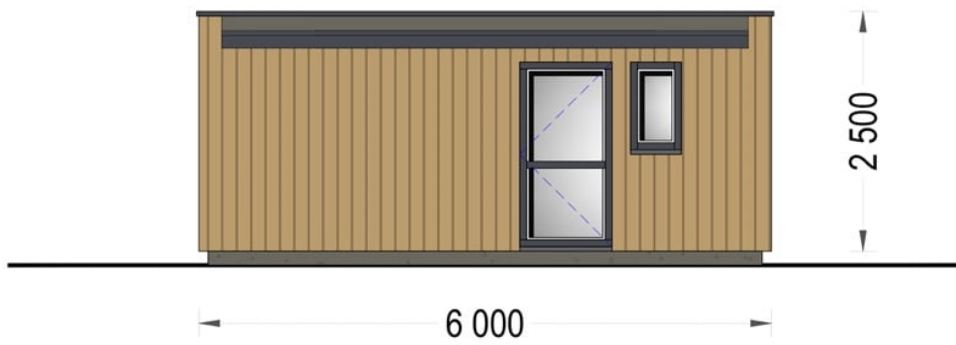
Pretul include: grinzi de fundatie tratate in autoclava, pereti (grinzi imbinare nut si feder pe cant si chertate la capete), podea (dusumea 20 mm imbinare nut si feder), usi si ferestre din lemn cu geam termopan (4/6/4, spatiu

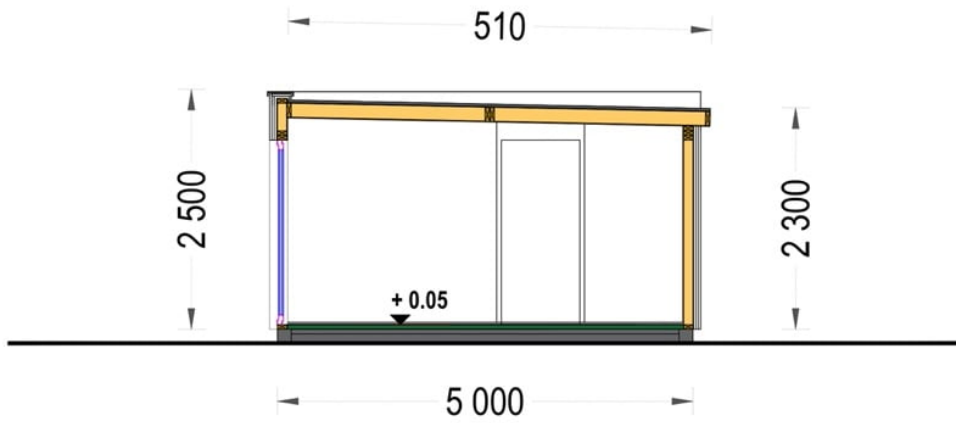
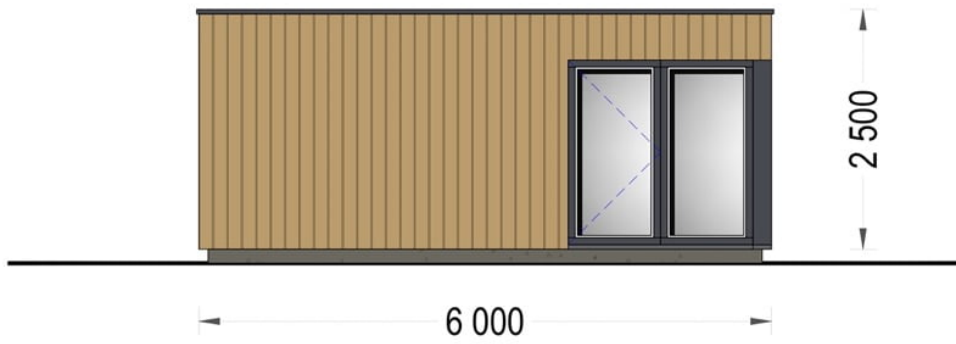


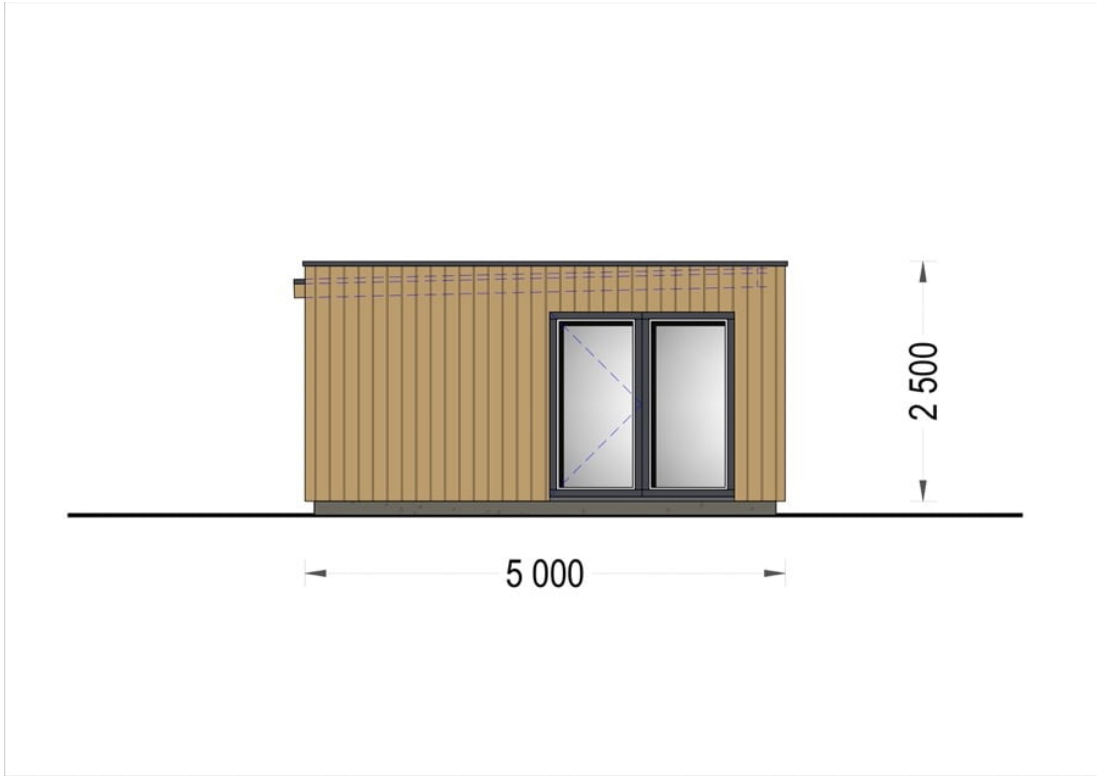
Material Pin si Molid Nordic
Grinzi de fundatie tratate in autoclava
Pereti opusi interschimbabili
Podea cu nut si feder inclus (in functie de modelul ales)
Usi si ferestre rezistente la umiditate
Feroneria inclusa
Asterala cu suport intarit
TVA inclus
Proiect tehnic
Rezistenta mai buna la putregai, mucegai si carii
Fabricat protejand padurile

SPECIFICATIILE SI IMAGINILE TEHNICE











SPECIFICATIILE TEHNICE

Dimensiuni externe	600 cm x 500 cm
Dimensiuni ferestre	PVC gri antracit
Grosime perete	Izolata ,SIPS
Inaltime la coama	250 cm
Inaltime la streasina	230 cm
Material	Panouri SIP
Material acoperis	Panouri SIP 224mm + placare din lemn
Material de podea	Izolatie 100 mm + laminat
Material invelitoare	Membrana EPDM
Suprafata acoperis	31 mp
Total metri patrati	30 m ²