



CASA IZOLAT DIN LEMN MORENI (34+34 MM) 27 M² + 10 M² MEZANIN

Produs #AV2128

PRETUL PRODUSULUI: 12875 € (~~12875~~)

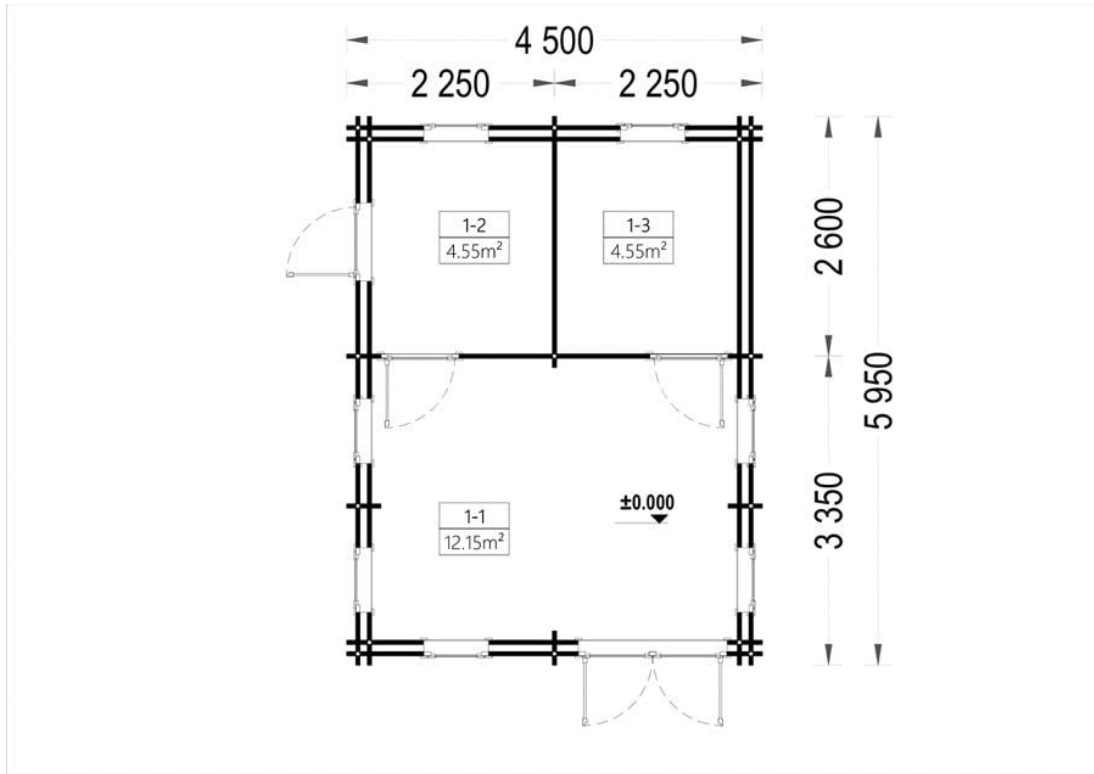
Pretul include: grinzi de fundatie tratate in autoclava, pereti (grinzi imbinare nut si feder pe cant si chertate la capete), podea (dusumea 20 mm imbinare nut si feder), usi si ferestre din lemn cu geam termopan (4/6/4, spatiu

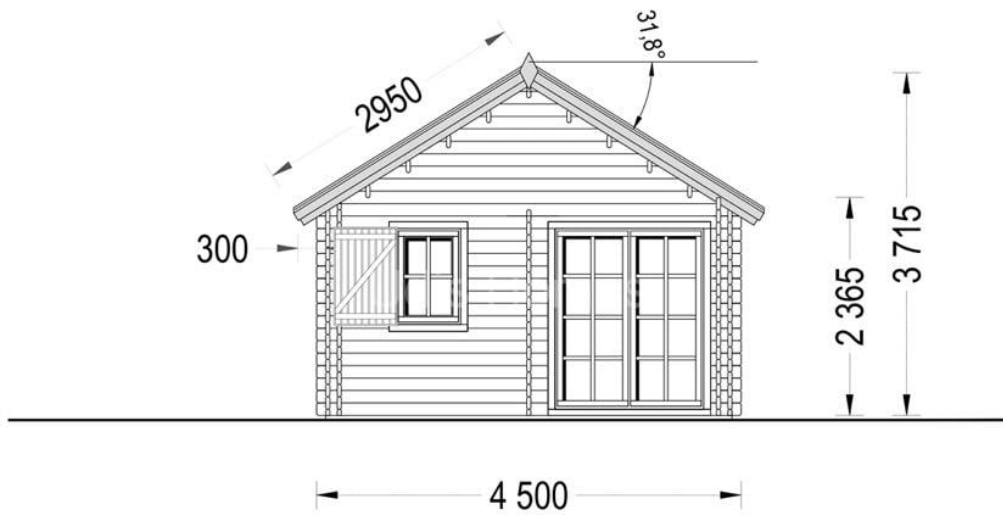
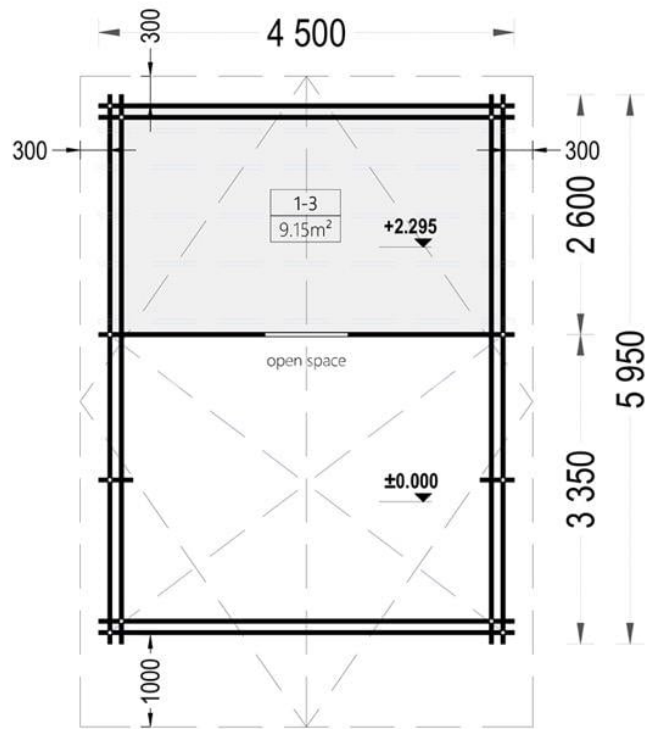


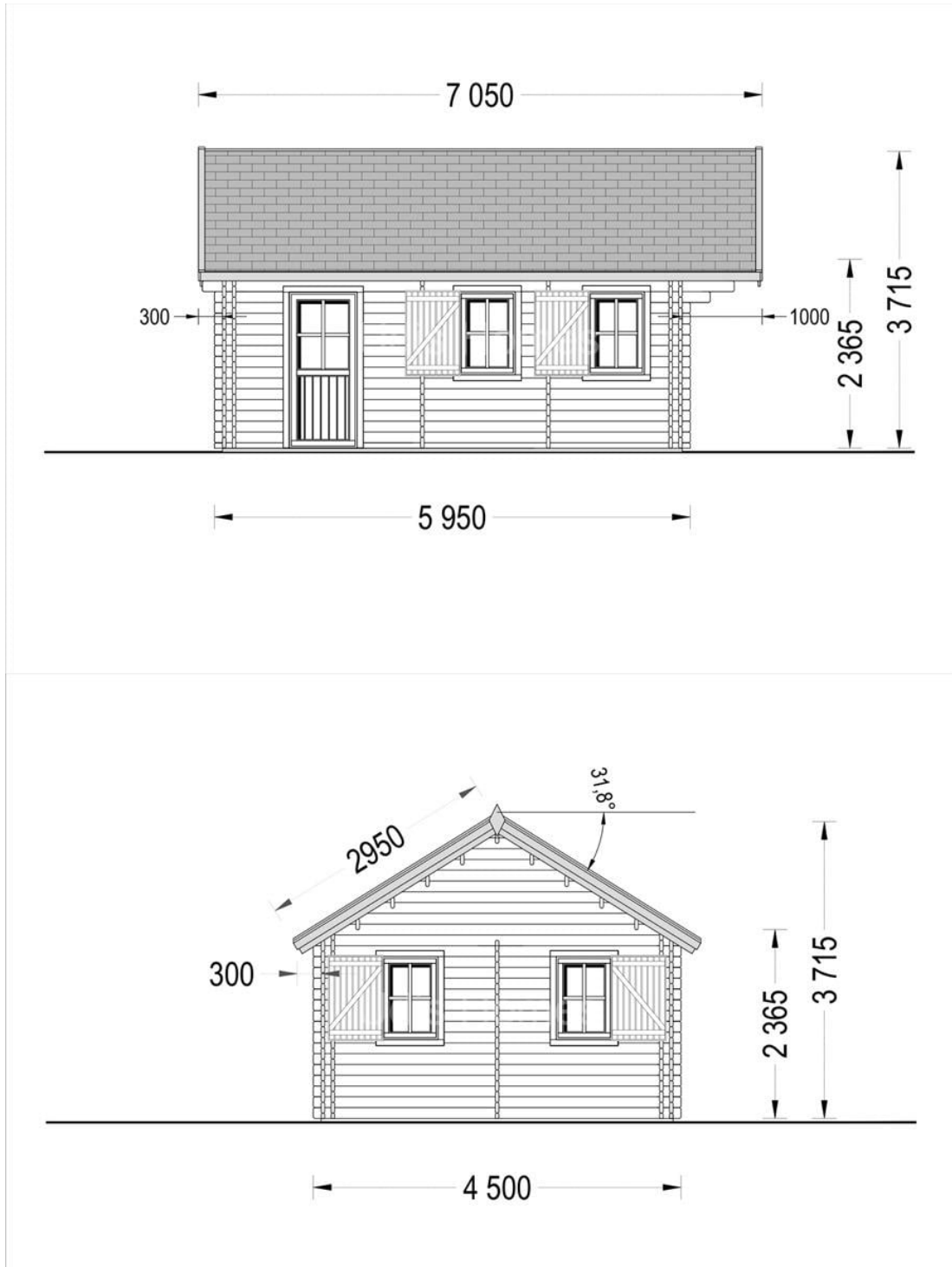
Material Pin si Molid Nordic
Grinzi de fundatie tratate in autoclava
Pereti opusi interschimbabili
Podea cu nut si feder inclus (in functie de modelul ales)
Usi si ferestre rezistente la umiditate
Feroneria inclusa
Asterala cu suport intarit
TVA inclus
Proiect tehnic
Rezistenta mai buna la putregai, mucegai si carii
Fabricat protejand padurile

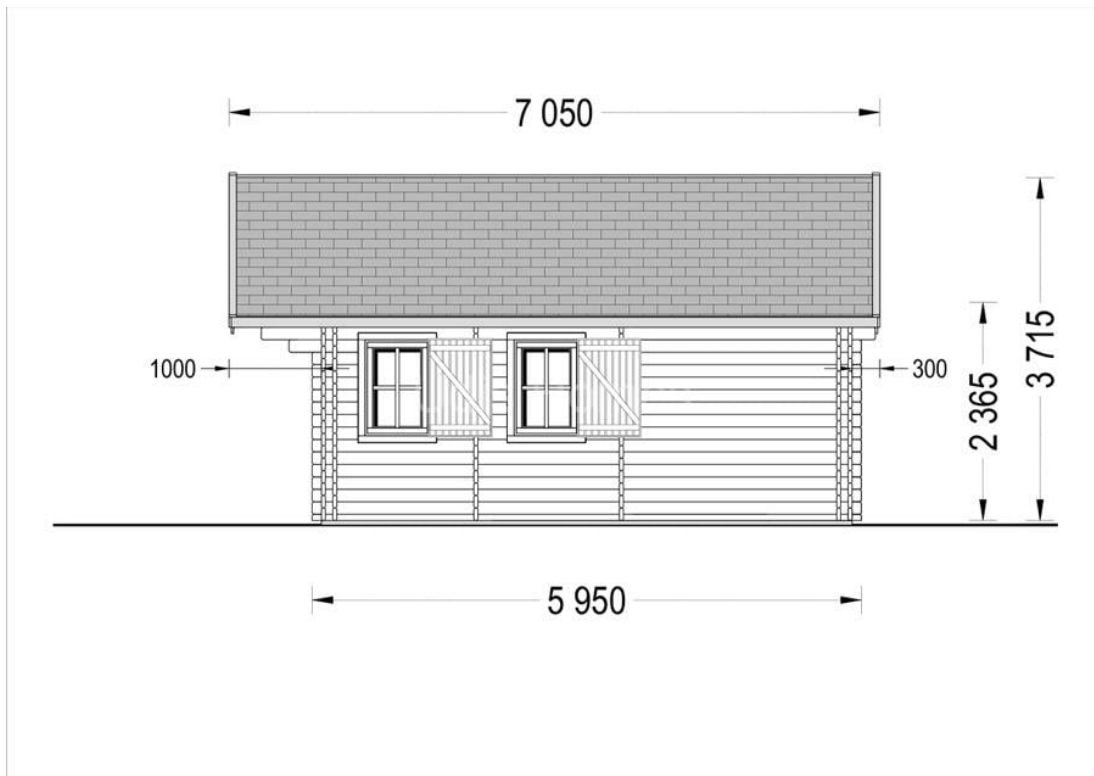


SPECIFICATIILE SI IMAGINILE TEHNICE









wall - 44x135
rafters - 44x135





SPECIFICATIILE TEHNICE

Dimensiuni ferestre	7* 70 cm x 105 cm
Grosime perete	34+34 mm
Inaltime la coama	3715 cm
Inaltime la streasina	236.5 cm
Material	Pin nordic natural,crescut lent
Material acoperis	placi din lemn 19-20mm + capriori + izolatie 100 mm
Material de podea	Placi de grosime 19-20 mm (Nut și Feder inclus)izolatie 100 mm XPS
Material invelitoare	Optionalindrila bituminosatabla faltuitatigla metalica
Panta acoperisului	318°
Suprafata acoperis	42 mp
Total metri patrati	27 m ²
Usa latime x inaltime	3* 85 cm x 192 cm; 1* 161 cm x 192 cm