



CASA DIN LEMN CU TERASA COLIBRI (44 MM) 36 M² + 8M²

Prodot #AV314

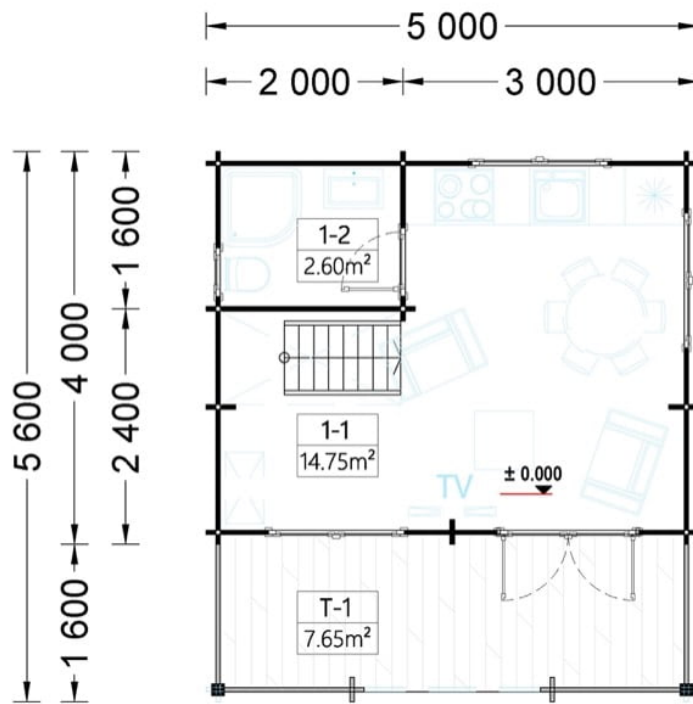
PRETUL PRODUSULUI: 10744 € (~~10744~~)

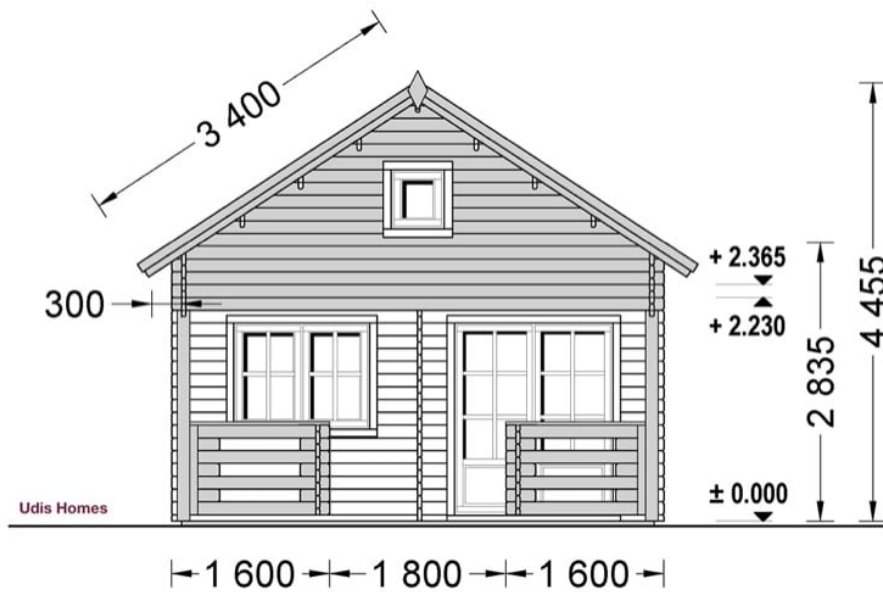
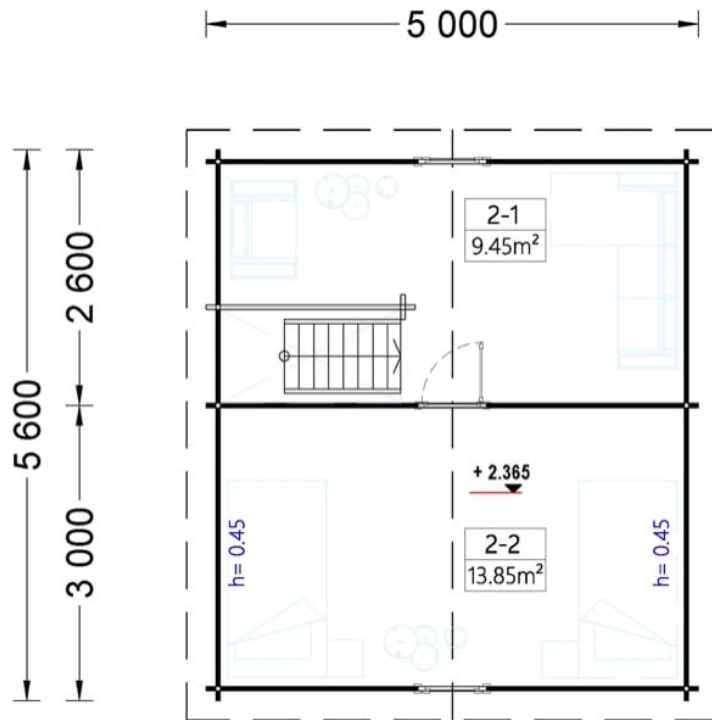
Pretul include: grinzi de fundatie tratate in autoclava, pereti (grinzi imbinare nut si feder pe cant si chertate la capete), podea (dusumea 20 mm imbinare nut si feder), usi si ferestre din lemn cu geam termopan (4/6/4, spatiu

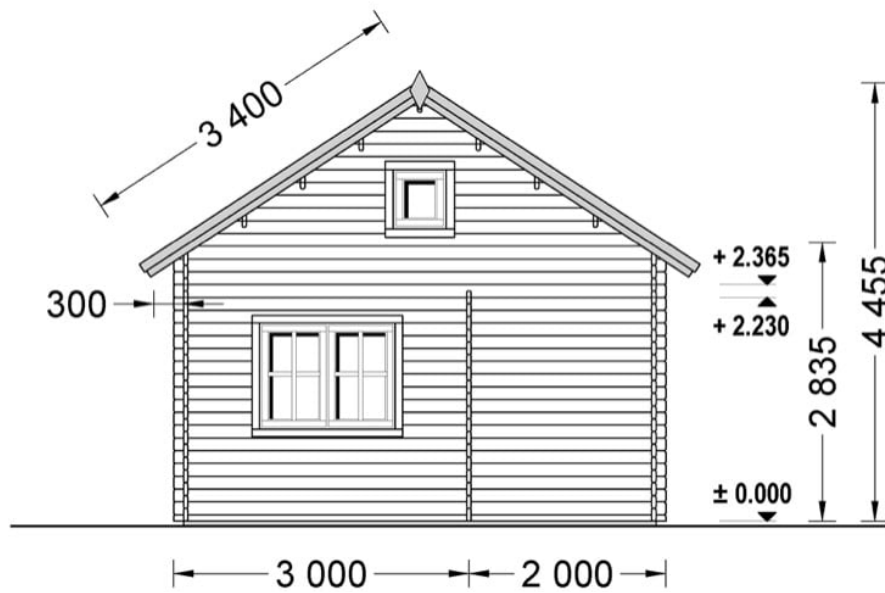
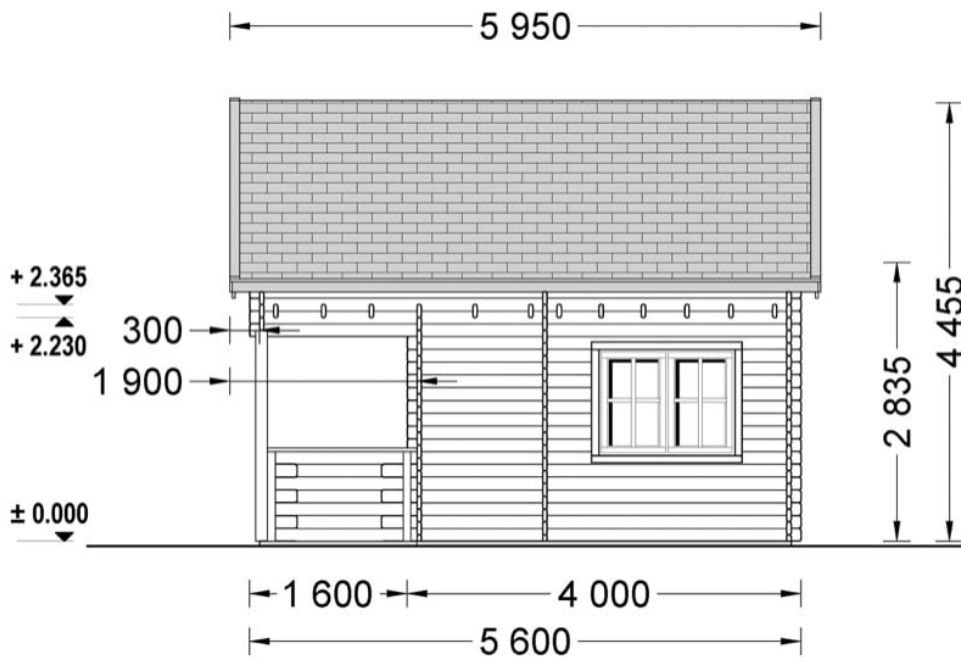


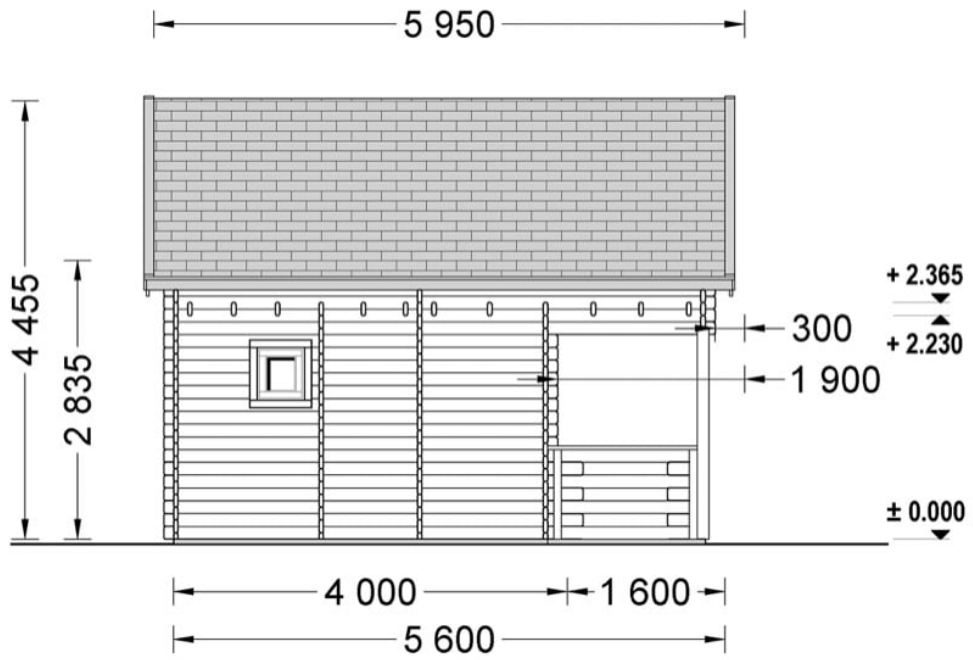
Material Pin si Molid Nordic
Grinzi de fundatie tratate in autoclava
Pereti opusi interschimbabili
Podea cu nut si feder inclus (in functie de modelul ales)
Usi si ferestre rezistente la umiditate
Feroneria inclusa
Asterala cu suport intarit
TVA inclus
Proiect tehnic
Rezistenta mai buna la putregai, mucegai si carii
Fabricat protejand padurile

SPECIFICATIILE SI IMAGINILE TEHNICE











SPECIFICATIILE TEHNICE

Dimensiuni externe	560cm x 500cm
Dimensiuni ferestre	3* 138 cm x 105 cm; 3* 50 cm x 50 cm
Grosime perete	44 mm
Inaltime la coama	445.5cm
Inaltime la streasina	283.5 cm
Material	Pin nordic natural, crescut lent
Material acoperis	Placi de grosime 19-20 mm (Nut și Feder inclus)
Material de podea	Placi de grosime 19-20 mm (Nut și Feder inclus)
Material invelitoare	Optional
Panta acoperisului	34°
Suprafata acoperis	41 mp
Tratament pentru lemn	Opțional
Usa latime x inaltime	1* 161 cm x 192 cm