



CASA DIN MOLID NORDIC SIGHIOARA (68MM) 112 M² , 4 DORMITOARE

Prodot #AV408

PRETUL PRODUSULUI: 32350 € (~~32350~~)

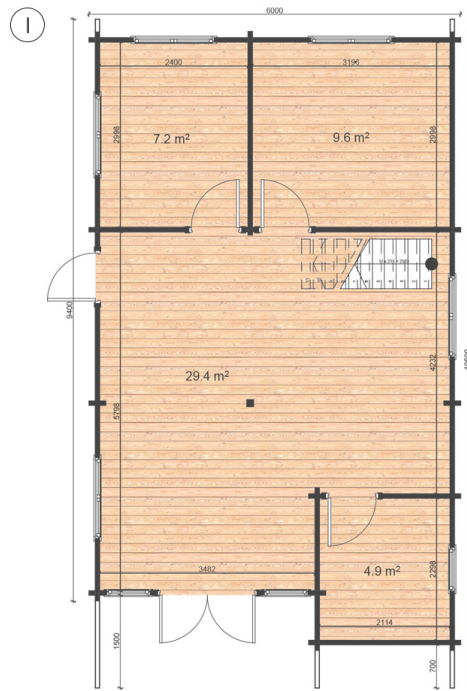
Pretul include: grinzi de fundatie tratate in autoclava, pereti (grinzi imbinare nut si feder pe cant si chertate la capete), podea (dusumea 20 mm imbinare nut si feder), usi si ferestre din lemn cu geam termopan (4/6/4, spatiu

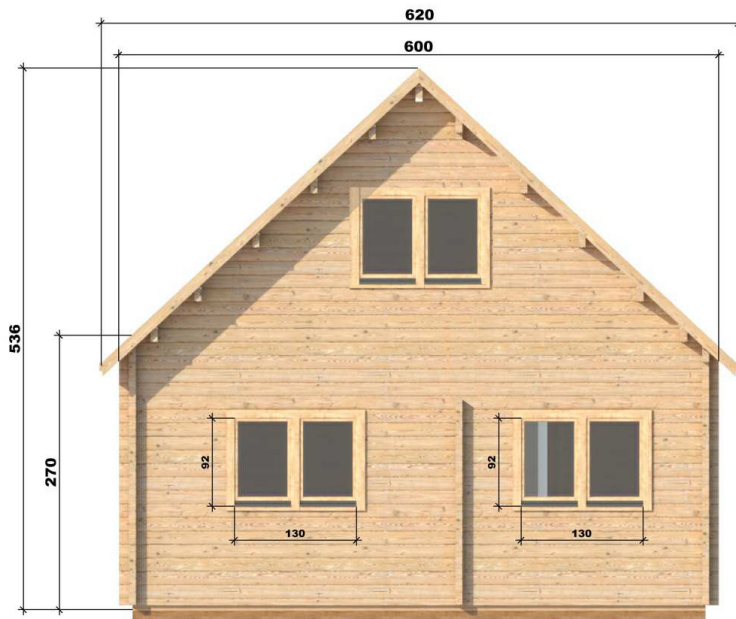
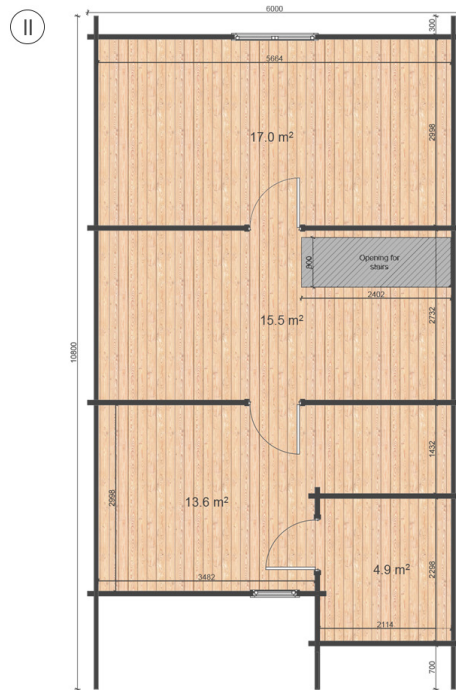


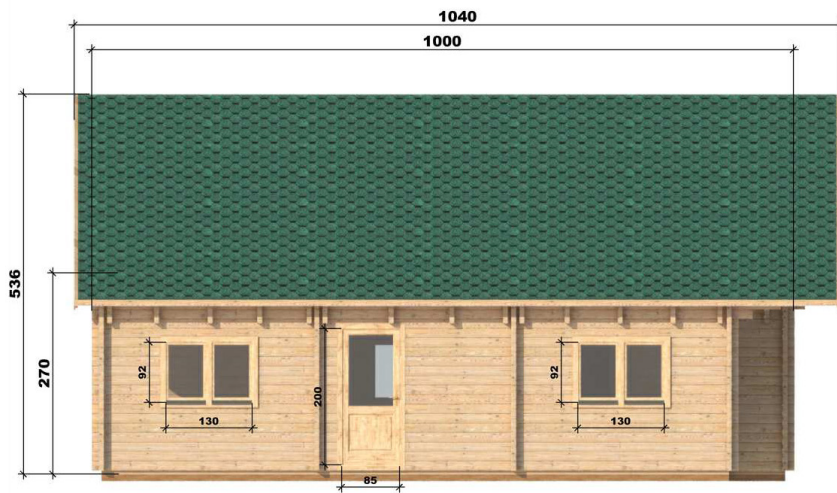
Material Pin si Molid Nordic
Grinzi de fundatie tratate in autoclava
Pereti opusi interschimbabili
Podea cu nut si feder inclus (in functie de modelul ales)
Usi si ferestre rezistente la umiditate
Feroneria inclusa
Asterala cu suport intarit
TVA inclus
Proiect tehnic
Rezistenta mai buna la putregai, mucegai si carii
Fabricat protejand padurile

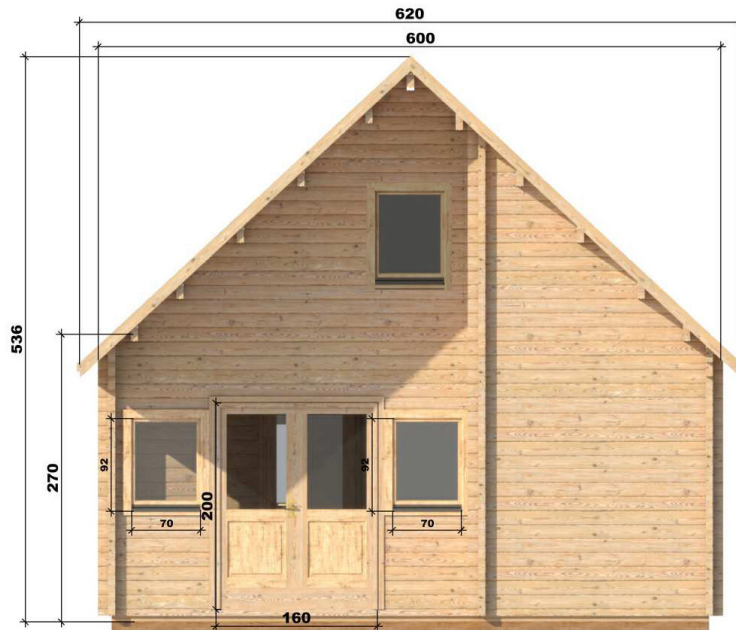


SPECIFICATIILE SI IMAGINILE TEHNICE











SPECIFICATIILE TEHNICE

Dimensiuni ferestre	2 buc. 0.92x0.7m , 3 buc 0.92x1.3m
Grosime perete	68 mm
Inaltime la coama	533 cm
Inaltime la streasina	270 cm
Material	Molid Nordic crescut lent
Material acoperis	Placi de grosime 19-20 mm (Nut și Feder inclus)
Material de podea	Placi de grosime 28mm cu nut si feder inclus
Material invelitoare	Optional : sindrila bituminoasa ,tigla metalica sau tabla faltuita
Sageac	30 cm