



CASA IZOLATA DIN LEMN COMANA (44+44 MM) 56 M²

Produs #AV324-1

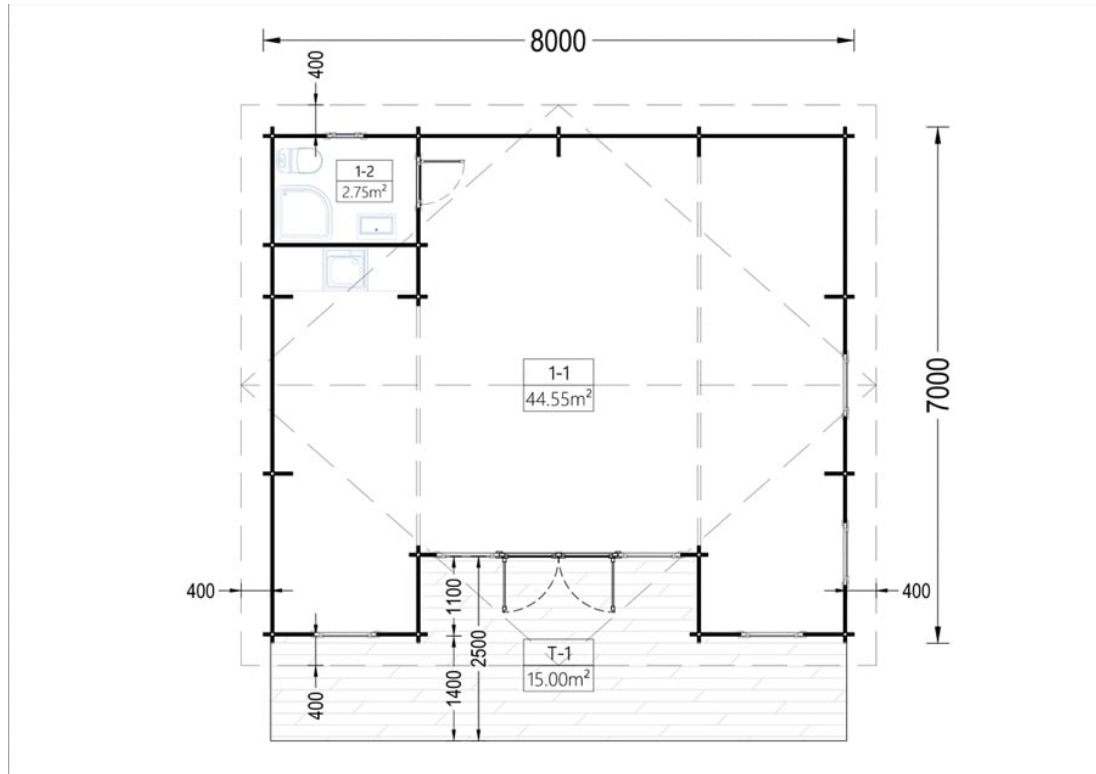
PRETUL PRODUSULUI: 21811 € (~~21811~~)

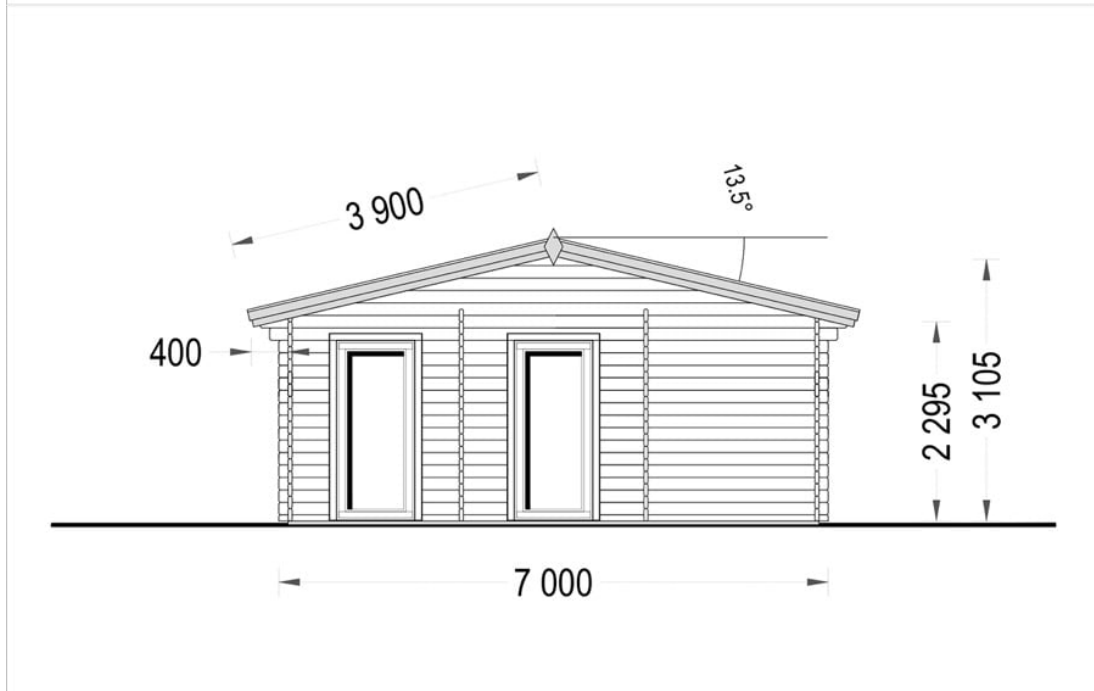
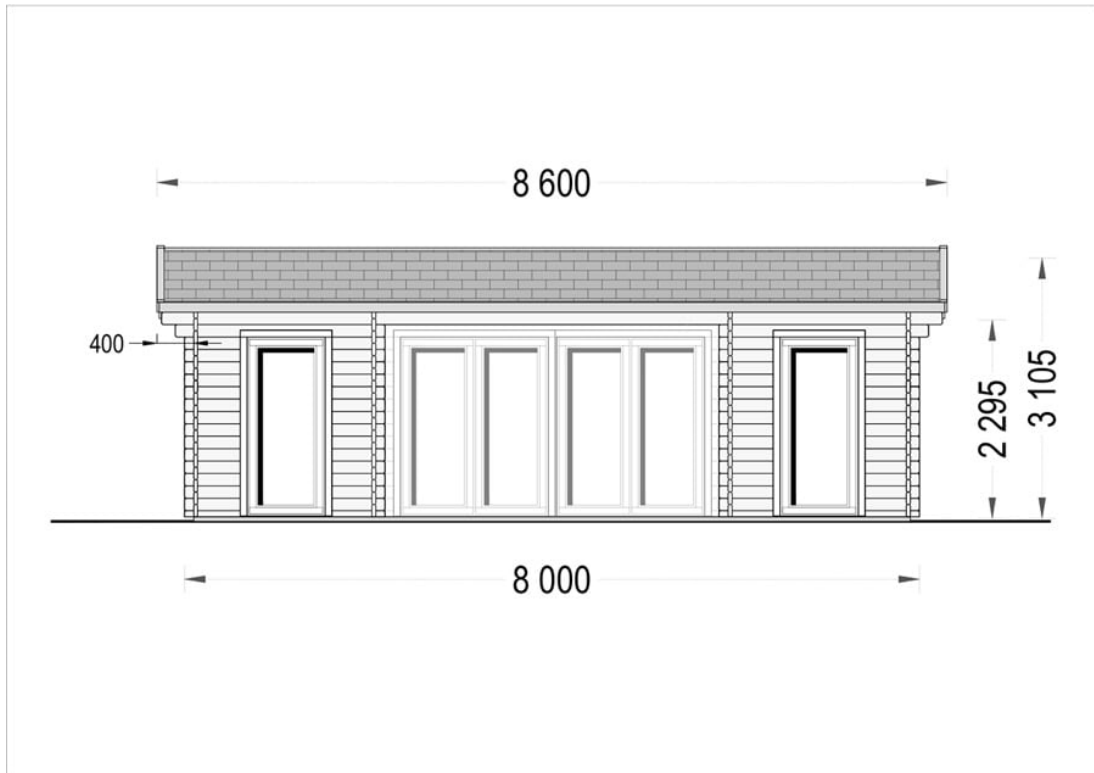
Pretul include: grinzi de fundatie tratate in autoclava, pereti (grinzi imbinare nut si feder pe cant si chertate la capete), podea (dusumea 20 mm imbinare nut si feder), usi si ferestre din lemn cu geam termopan (4/6/4, spatiu

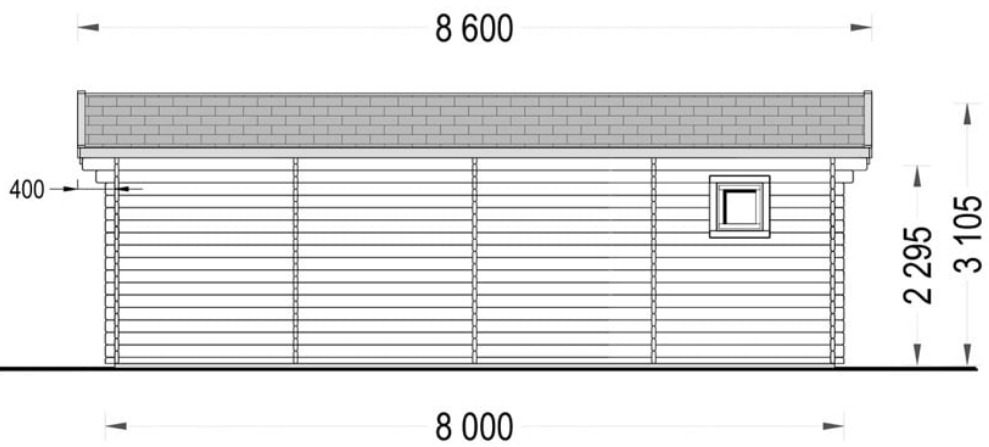
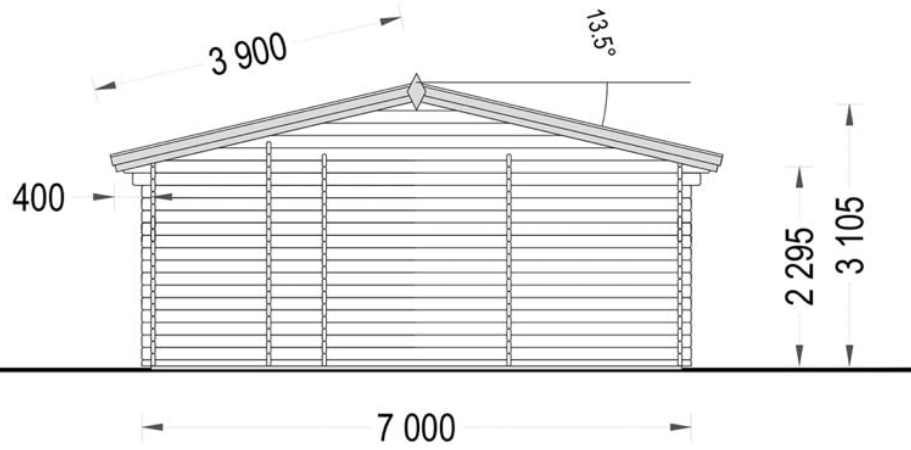


Material Pin si Molid Nordic
Grinzi de fundatie tratate in autoclava
Pereti opusi interschimbabili
Podea cu nut si feder inclus (in functie de modelul ales)
Usi si ferestre rezistente la umiditate
Feroneria inclusa
Asterala cu suport intarit
TVA inclus
Proiect tehnic
Rezistenta mai buna la putregai, mucegai si carii
Fabricat protejand padurile

SPECIFICATIILE SI IMAGINILE TEHNICE









SPECIFICATIILE TEHNICE

Dimensiuni ferestre	6* 85 cm x 192 cm; 1* 50 cm x 50 cm
Grosime perete	44+44 mm
Inaltime la coama	3105 cm
Inaltime la streasina	2295 cm
Material	Pin nordic natural,crescut lent
Material acoperis	placi din lemn 19-20mm + capriori + izolatie 100 mm
Material de podea	Placi de grosime 19-20 mm (Nut și Feder inclus)izolatie 100 mm XPS
Material invelitoare	Optionalindrila bituminosatabla faltuitatigla metalica
Panta acoperisului	135°
Suprafata acoperis	67 mp
Total metri patrati	56 m ²
Usa latime x inaltime	1* 161 cm x 192 cm; 1* 85 cm x 192 cm