



# CASA IZOLAT DIN LEMN MIORITA (44+44 MM) 50 M<sup>2</sup>

Produs #AV1623

**PRETUL PRODUSULUI: 20982 € (~~20982~~)**

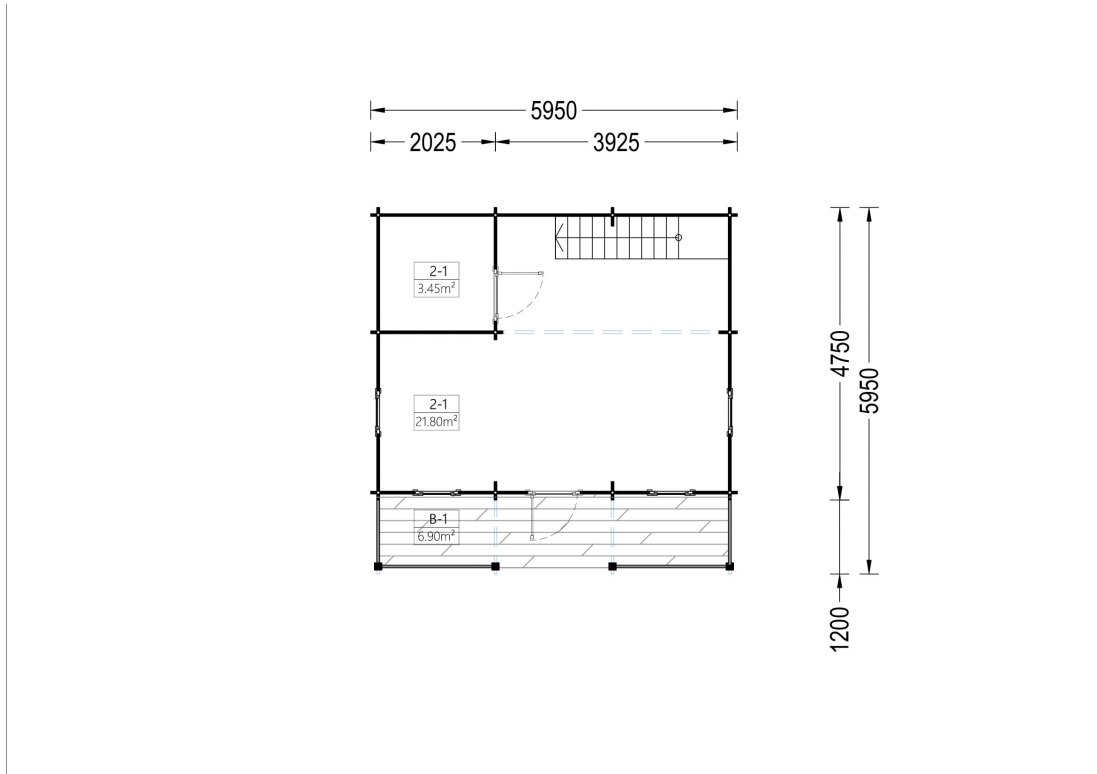
*Pretul include: grinzi de fundatie tratate in autoclava, pereti (grinzi imbinare nut si feder pe cant si chertate la capete), podea (dusumea 20 mm imbinare nut si feder), usi si ferestre din lemn cu geam termopan (4/6/4, spatiu*

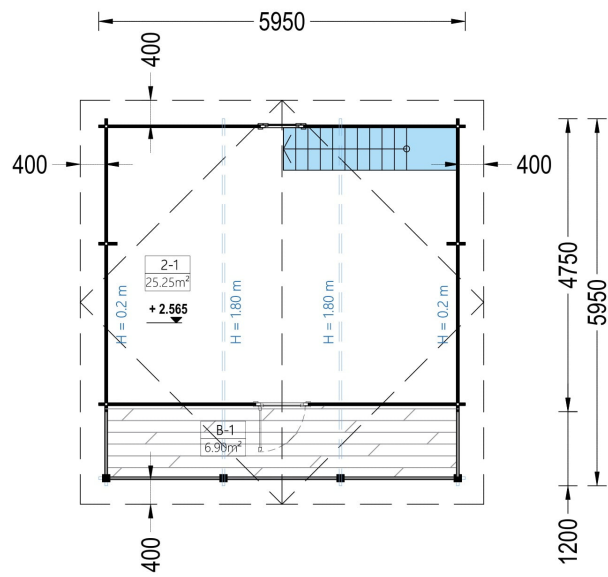


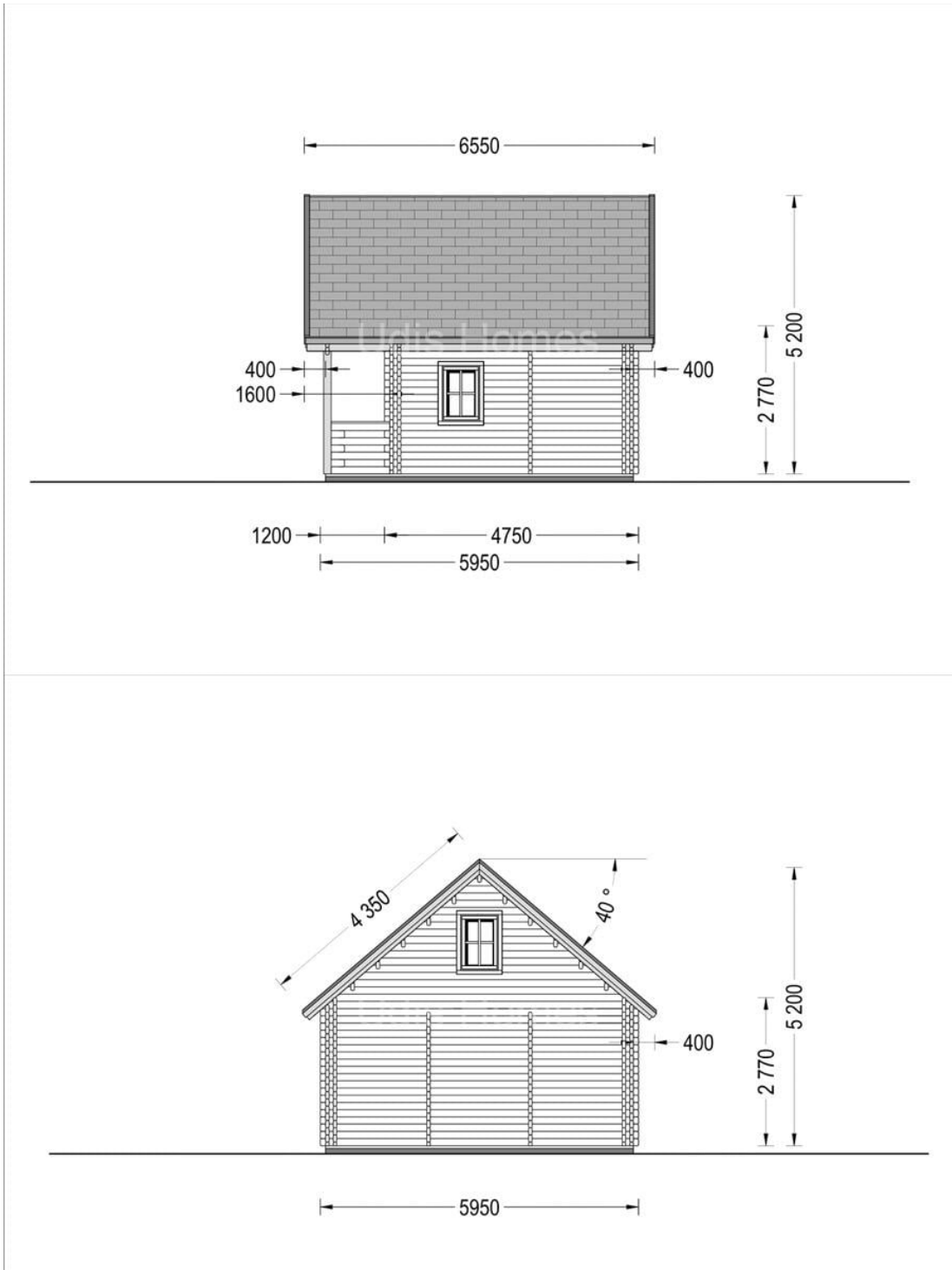
*Material Pin si Molid Nordic*  
*Grinzi de fundatie tratate in autoclava*  
*Pereti opusi interschimbabili*  
*Podea cu nut si feder inclus (in functie de modelul ales)*  
*Usi si ferestre rezistente la umiditate*  
*Feroneria inclusa*  
*Asterala cu suport intarit*  
*TVA inclus*  
*Proiect tehnic*  
*Rezistenta mai buna la putregai, mucegai si carii*  
*Fabricat protejand padurile*

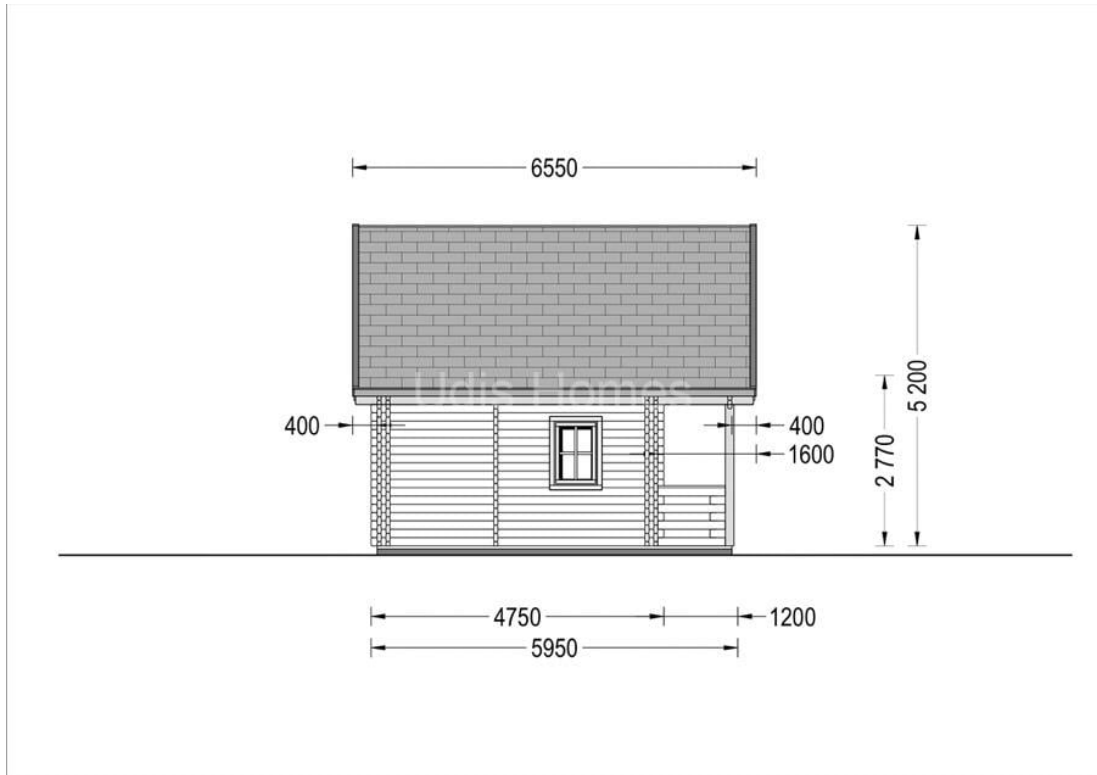


# SPECIFICATIILE SI IMAGINILE TEHNICE











## SPECIFICATIILE TEHNICE

|                       |   |
|-----------------------|---|
| Dimensiuni externe    | 595 cm x 595 cm (475 cm + 120 cm)                                   |
| Dimensiuni ferestre   | 5* 70 cm x 105 cm   |
| Grosime perete        | 44+44 mm  |
| Inaltime la coama     | 513 cm  |
| Inaltime la streasina | 270 cm  |
| Material              | Pin nordic natural, crescut lent                                    |
| Material acoperis     | placi din lemn 19-20mm + capriori + izolatie 100 mm                 |
| Material de podea     | Placi de grosime 19-20 mm (Nut și Feder inclus) izolatie 100 mm XPS |
| Material invelitoare  | Optional sindrila bituminosata tabla faltuita tigla metalica        |
| Panta acoperisului    | 40°   |
| Suprafata acoperis    | 57 mp   |
| Usa latime x inaltime | 3* 85 cm x 192 cm   |