



CASA IZOLATA PRUT 36M² +13.3M² MEZANIN + TERASA 19M²

Produs #AV2010

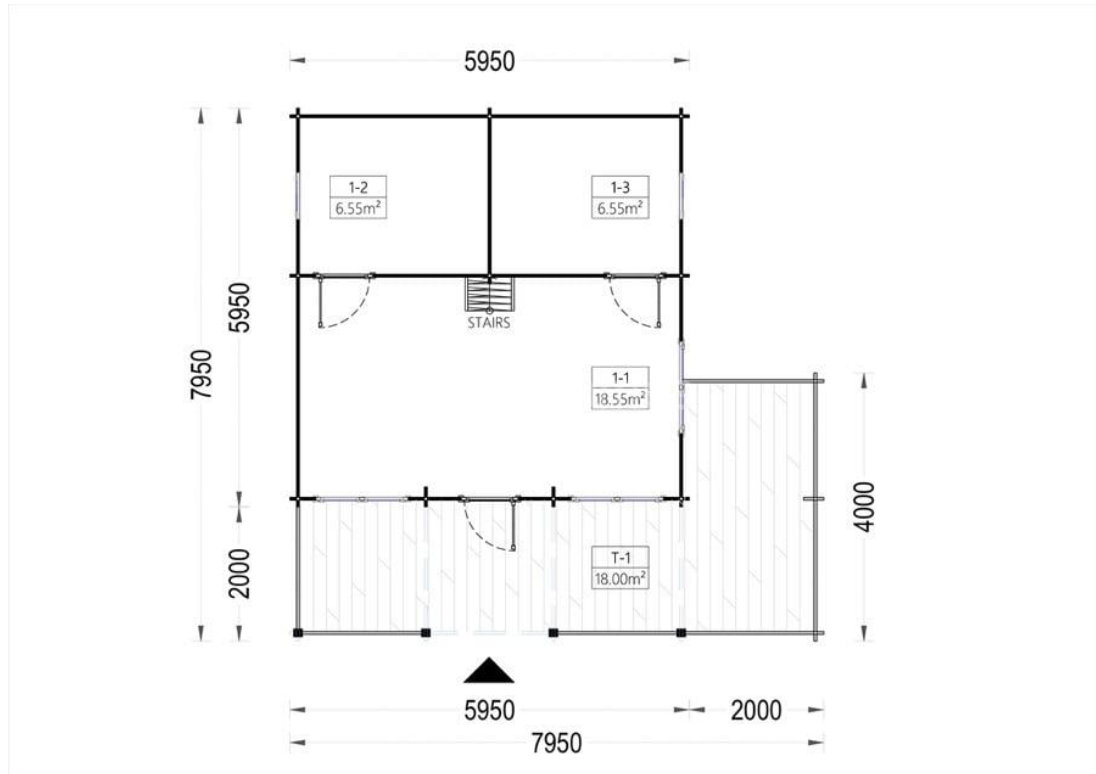
PRETUL PRODUSULUI: 19289 € (~~19289~~)

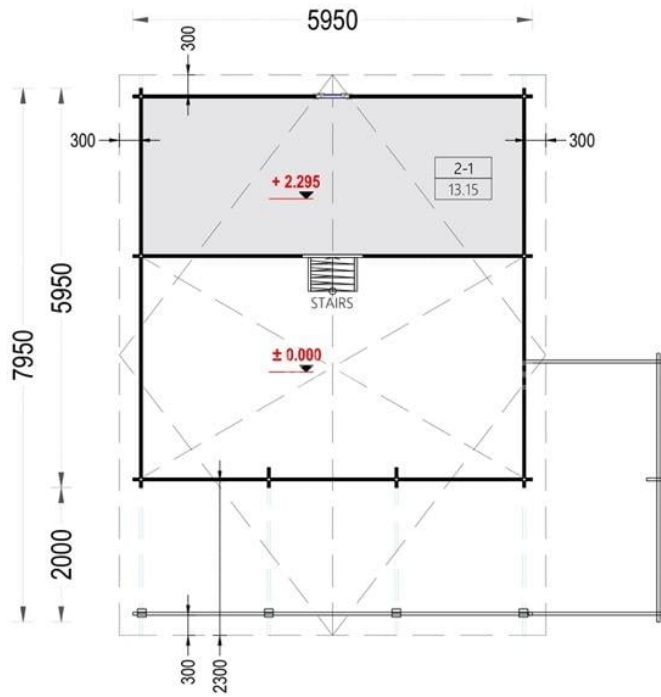
Pretul include: grinzi de fundatie tratate in autoclava, pereti (grinzi imbinare nut si feder pe cant si chertate la capete), podea (dusumea 20 mm imbinare nut si feder), usi si ferestre din lemn cu geam termopan (4/6/4, spatiu

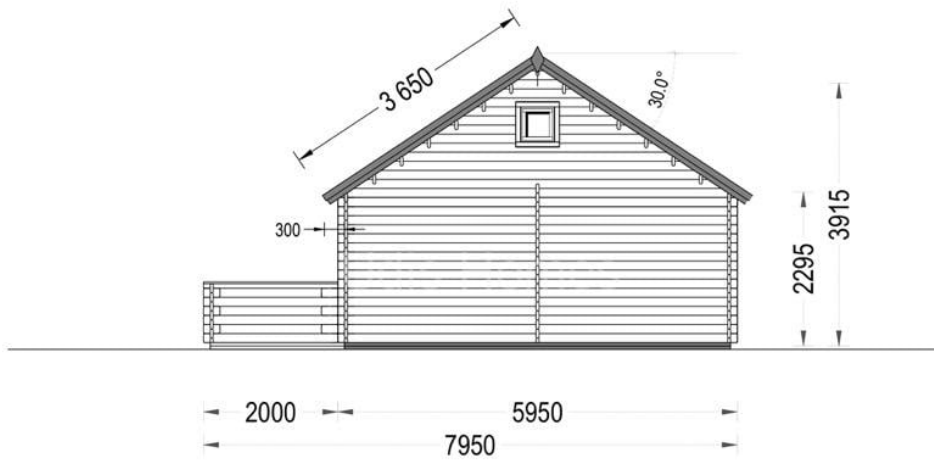


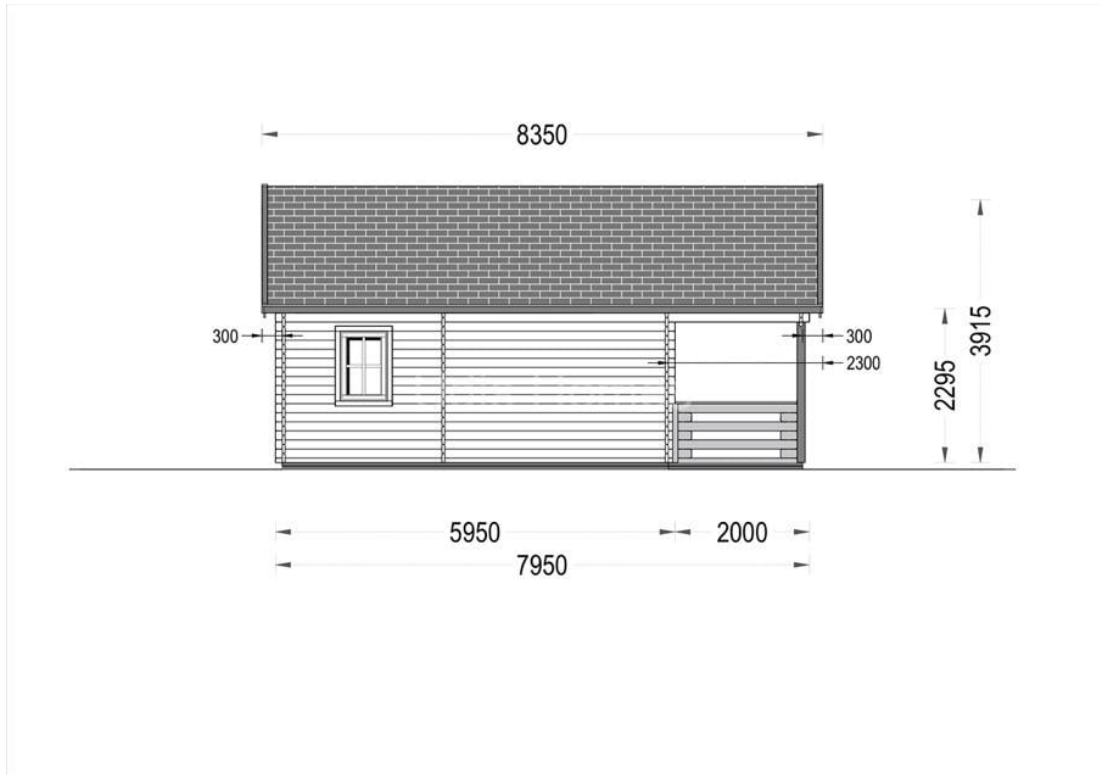
Material Pin si Molid Nordic
Grinzi de fundatie tratate in autoclava
Pereti opusi interschimbabili
Podea cu nut si feder inclus (in functie de modelul ales)
Usi si ferestre rezistente la umiditate
Feroneria inclusa
Asterala cu suport intarit
TVA inclus
Proiect tehnic
Rezistenta mai buna la putregai, mucegai si carii
Fabricat protejand padurile

SPECIFICATIILE SI IMAGINILE TEHNICE











SPECIFICATIILE TEHNICE

Dimensiuni ferestre	3* 138 cm x 105 cm; 2* 70 cm x 105 cm; 1* 50 cm x 50 cm
Grosime perete	34+34 mm
Inaltime la coama	391.5 cm
Inaltime la streasina	229.5 cm
Material	Pin nordic natural, crescut lent
Material acoperis	placi din lemn 19-20mm + capriori + izolatie 100 mm
Material de podea	Placi de grosime 19-20 mm (Nut și Feder inclus) izolatie 100 mm XPS
Material invelitoare	Optional
Panta acoperisului	30°
Suprafata acoperis	58 mp
Total metri patrati	36 m ²
Usa latime x inaltime	3* 85 cm x 192 cm