



# CASA IZOLATA DIN LEMN SINAIA, 50 M<sup>2</sup> CU 2 DORMITOARE

Produs #AV1098

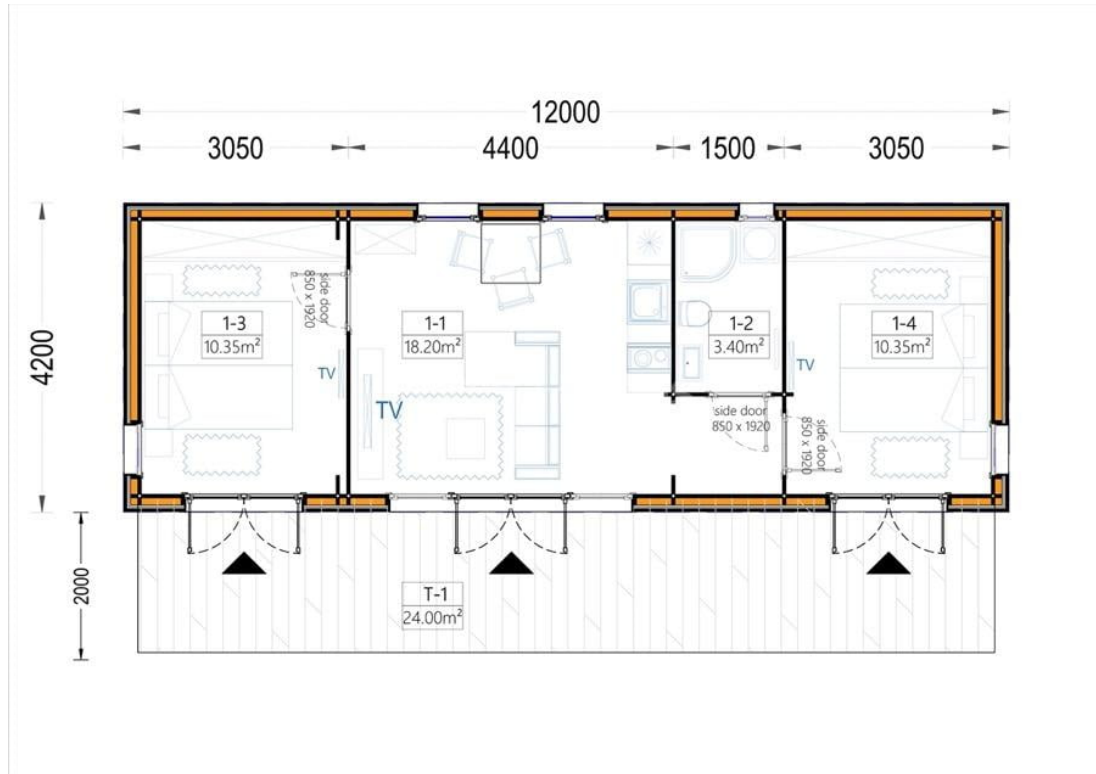
**PRETUL PRODUSULUI: 19975 € (~~19975~~)**

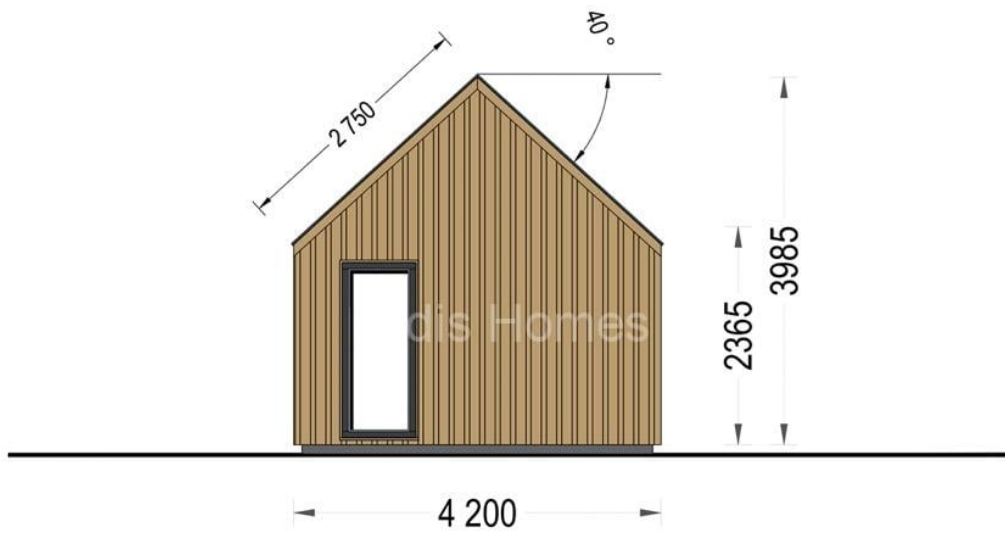
*Pretul include: grinzi de fundatie tratate in autoclava, pereti (grinzi imbinare nut si feder pe cant si chertate la capete), podea (dusumea 20 mm imbinare nut si feder), usi si ferestre din lemn cu geam termopan (4/6/4, spatiu*

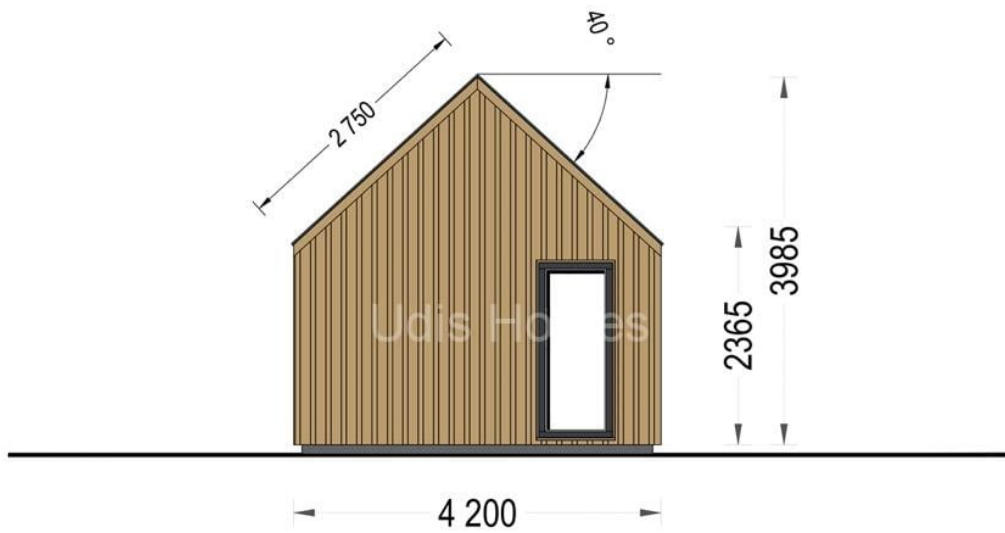
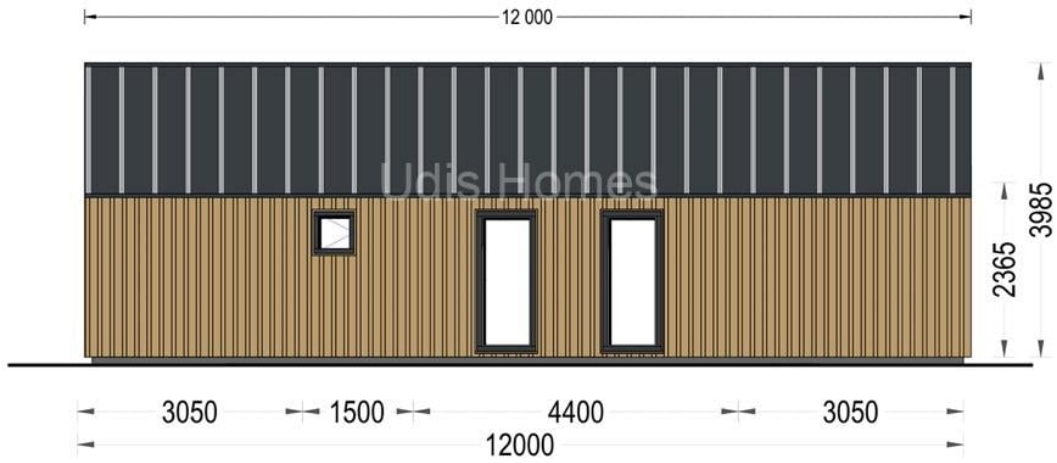


*Material Pin si Molid Nordic*  
*Grinzi de fundatie tratate in autoclava*  
*Pereti opusi interschimbabili*  
*Podea cu nut si feder inclus (in functie de modelul ales)*  
*Usi si ferestre rezistente la umiditate*  
*Feroneria inclusa*  
*Asterala cu suport intarit*  
*TVA inclus*  
*Proiect tehnic*  
*Rezistenta mai buna la putregai, mucegai si carii*  
*Fabricat protejand padurile*

# SPECIFICATIILE SI IMAGINILE TEHNICE









## SPECIFICATIILE TEHNICE

Dimensiuni ferestre	6* 85cm x 192 cm; 1* 50 cm x 50 cm
Grosime perete	34 mm + placare
Inaltime la coama	398.5 cm
Inaltime la streasina	236.5 cm
Material	Pin nordic natural,crescut lent
Material acoperis	placi din lemn 19-20mm + capriori + izolatie 100 mm
Material de podea	Placi de grosime 18-20 mm (Nut și Feder inclus)Izolatie 50mm XPS
Material invelitoare	Optionalindrila bituminosatabla faltuitatigla metalica
Panta acoperisului	40°
Suprafata acoperis	66 mp
Total metri patrati	50 m <sup>2</sup>
Usa latime x inaltime	3* 161 cm x 192 cm; 3* 85 cm x 192 cm