



# CASA LOCUIBILA PREMIUM (IZOLATA, SIPS) 10.5×4.5 M 47 M<sup>2</sup> CU 2 DORMITORE

Produs #AV1651

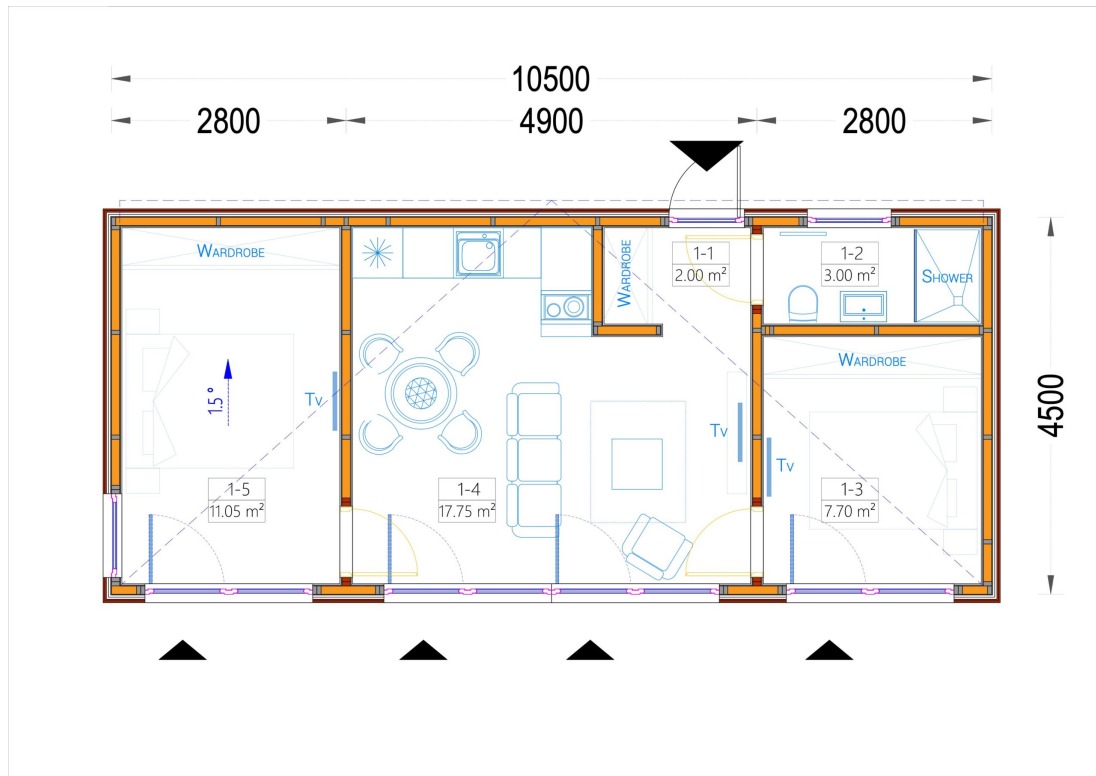
**PRETUL PRODUSULUI: 40545 € (40545)-**

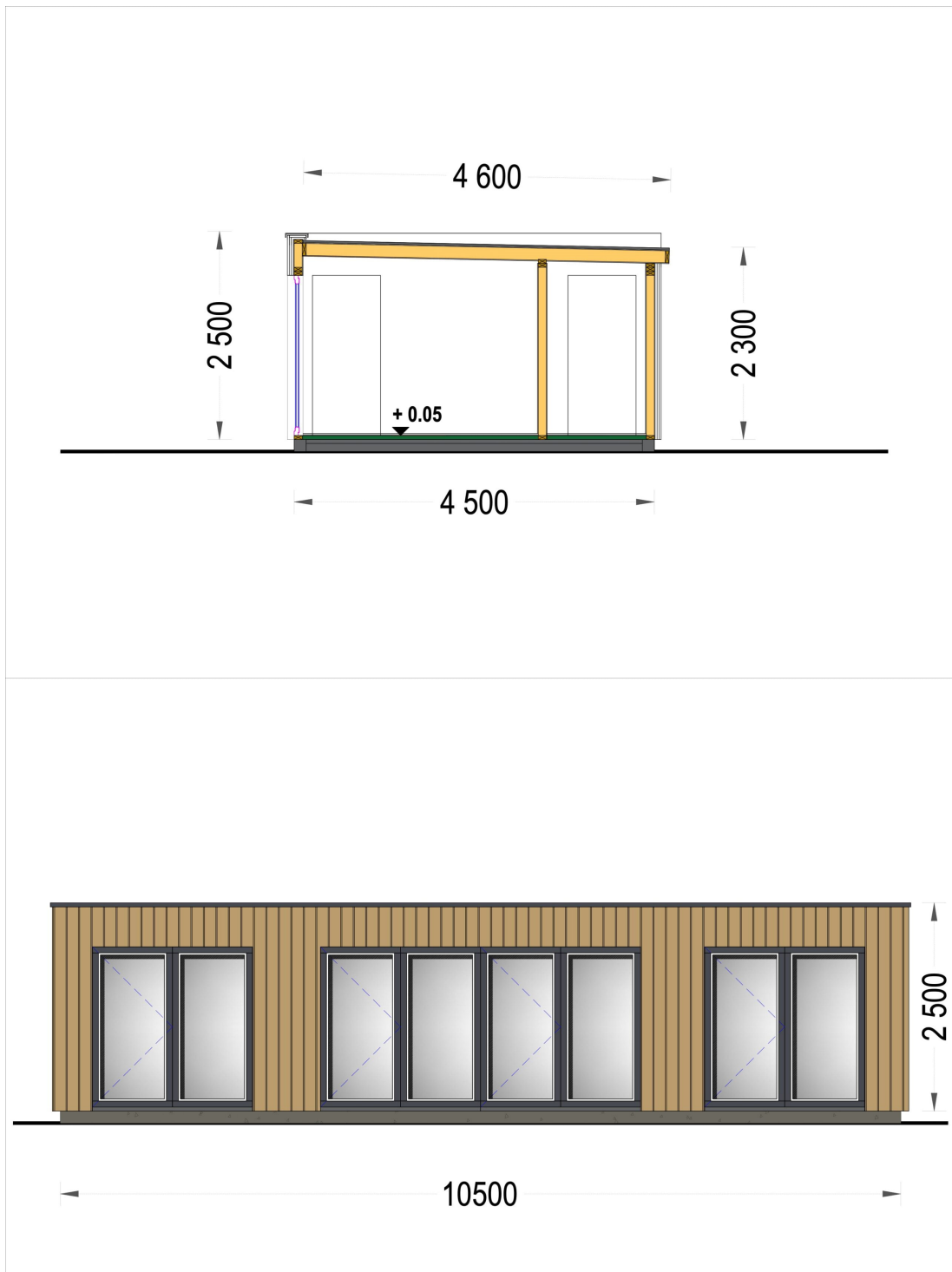
*Pretul include: grinzi de fundatie tratate in autoclava, pereti (grinzi imbinare nut si feder pe cant si chertate la capete), podea (dusumea 20 mm imbinare nut si feder), usi si ferestre din lemn cu geam termopan (4/6/4, spatiu*

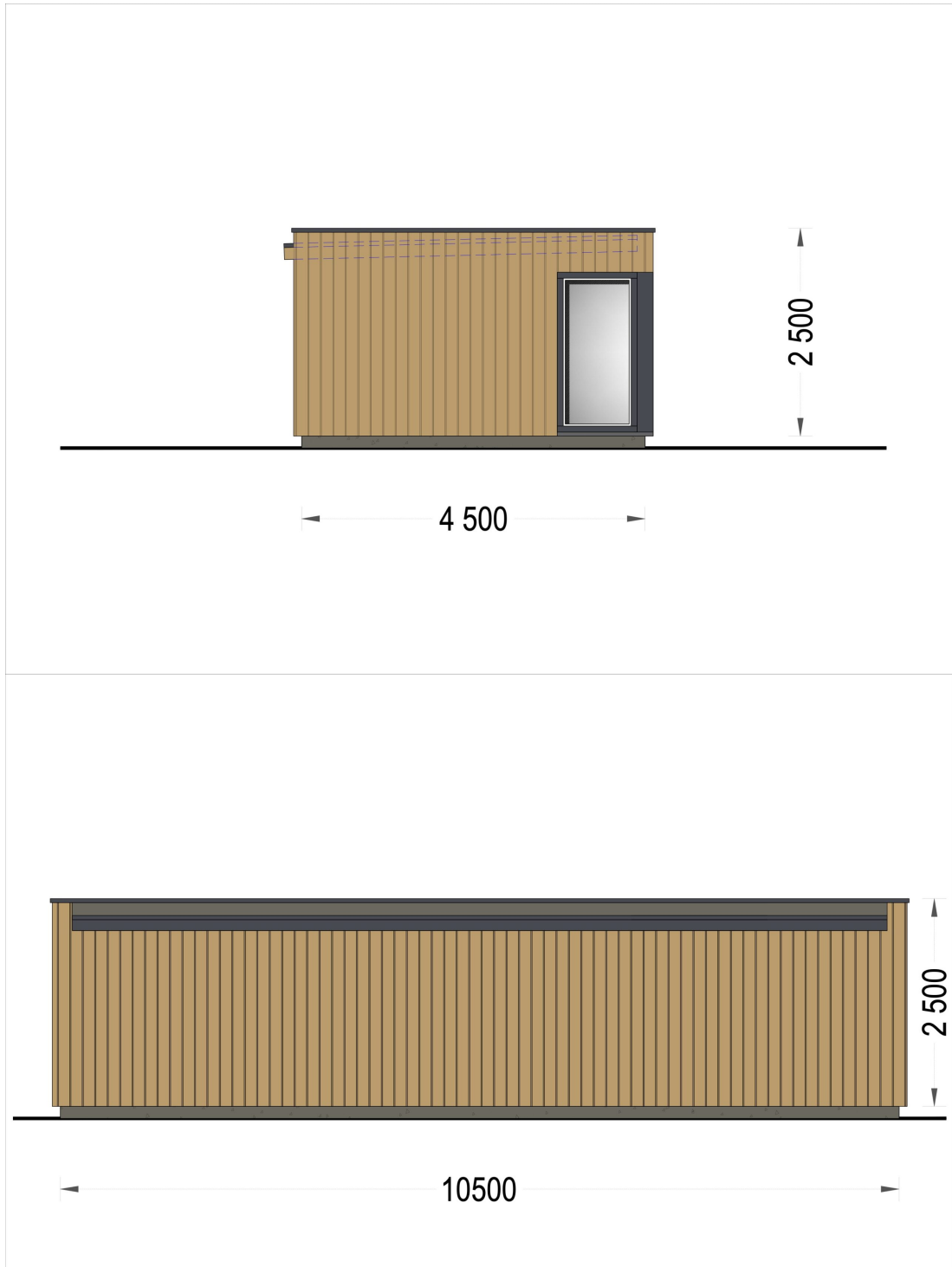


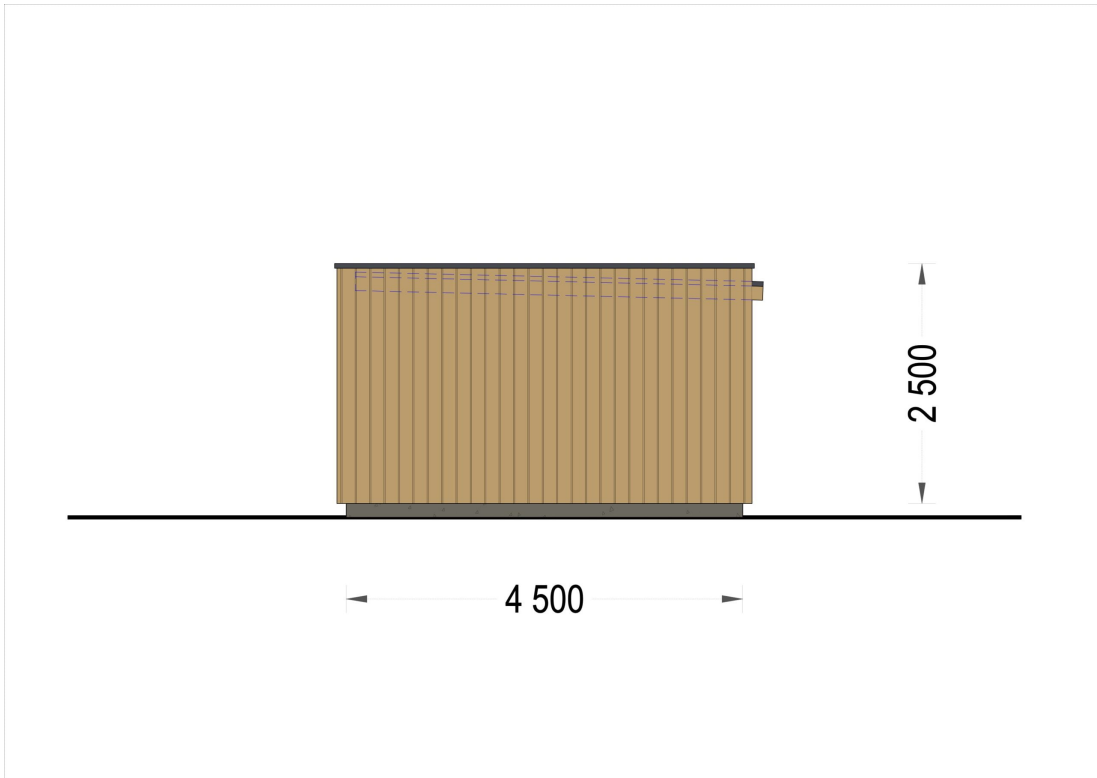
*Material Pin si Molid Nordic*  
*Grinzi de fundatie tratate in autoclava*  
*Pereti opusi interschimbabili*  
*Podea cu nut si feder inclus (in functie de modelul ales)*  
*Usi si ferestre rezistente la umiditate*  
*Feroneria inclusa*  
*Asterala cu suport intarit*  
*TVA inclus*  
*Proiect tehnic*  
*Rezistenta mai buna la putregai, mucegai si carii*  
*Fabricat protejand padurile*

# SPECIFICATIILE SI IMAGINILE TEHNICE











## SPECIFICATIILE TEHNICE

Dimensiuni externe	1050 x 450 cm
Dimensiuni ferestre	1* 55 x 95 cm; 1* 95 x 195 cm; 4* 195 x 195 cmPVC gri antracit
Grosime perete	Izolata ,SIPS
Inaltime la coama	250 cm
Inaltime la streasina	230 cm
Material	Panouri SIP
Material acoperis	Panouri SIP 224mm + placare
Material de podea	izolație 100mm + laminat
Material invelitoare	Membrana EPDM
Total metri patrati	47.25 m <sup>2</sup>
Usa latime x inaltime	1* 90 x 195 cm; 3* 80 x 195 cmPVC gri antracit